



every space
the right
character

made
in
holland

besouw.nl



van besouw magazine

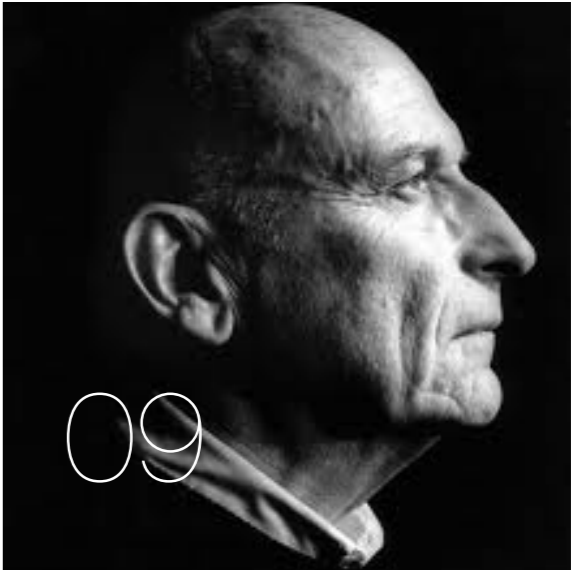
Contents

Van Besouw

- 06 Excellence since 1839
- 08 DNA of Van Besouw
- 09 Craftsmanship & design

Collection

- 12 Product groups
 - 12 cotton
 - 14 project
 - 16 specials
 - 18 carpet tiles
 - 20 wool
- 24 Product overview





design your life

www.besouw.nl

van besouw carpets Headstrong, through and through

You can say that again. Van Besouw's unusual choice of fibres has stirred up the world of carpets more than once. The arrival of the first cotton carpet, the 3801, was nothing short of a revolution. Not immediately appreciated, of course.

Cotton was considered inferior: you bought a cheap cotton one at the market. It is 1969 and people had yet to learn

to appreciate natural fibres. Today we know better. After a hesitant start, the Dutch carpet industry descended en masse on the phenomenon of cotton carpets. Or rather, the phenomenon 3801.

By the end of the seventies, we counted 58 copies on the market. But Van Besouw had long since moved on to the next stage. The cotton velvet 3802 followed. Competitors never succeeded in copying this successful carpet.

Excellence since 1839

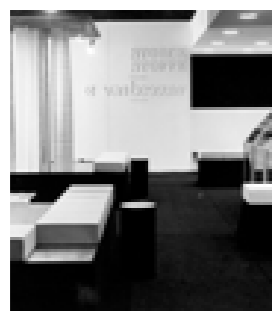
1839, Goirle

Van Besouw was founded in Holland in 1839 with home weavers



1885, Goirle

Start of the first factory with production of linen and bags



1904, Goirle

Van Besouw started with Holtap (Holland Carpets)
Carpets in 200cm width and rugs

1949, Goirle

Van Besouw get the wilton weaving machines. Originally Van Besouw wall-to wall carpets



1967, Goirle

Start of Van Besouw as a brandname.

Slogan: unbutton and just pretend carpet does not exist (it's not just a carpet ... it's a Van Besouw

1967, Goirle

The "turn around" in Van Besouw's history. Introduction of the cotton carpets made on raschel knitting machines

1966, Goirle

Benno Premsele (Industrial Designer) was invited. To design the next step of Van Besouw



2010, Genemuiden

Van Besouw was taken over, into the the current organisation

#

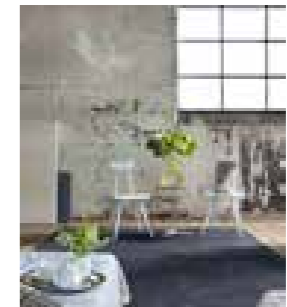
Cotton is the tradition of Van Besouw and famous for this all over the world.

#

Van Besouw well known for its special colors and innovative products

#

Van Besouw is a passion, emotion, and you need to believe in it



2013, Genemuiden

Re-introduction of the cotton collection. With a new colour range and an extra quality: 3809

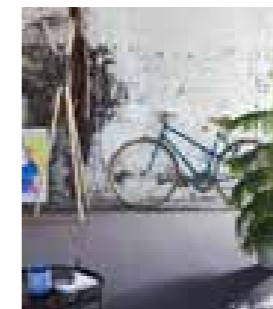
1970, Goirle

Winner of the famous award (at that time) for the woolmark collection



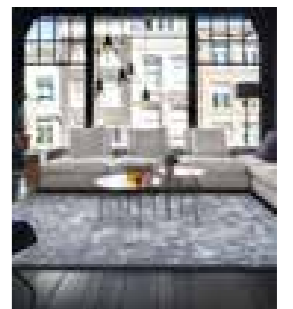
2012, Genemuiden

Introduction of the Van Besouw PREM. Collections.
A polyamide contract collection, based Van Besouw's key values.



2017, Genemuiden

Introduction of the soft and luxurious cotton collections.
Introduction of carpet tiles



key values

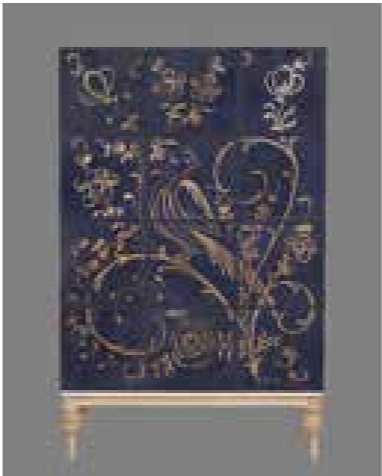
DNA of Van Besouw



Besouw is unique in name, innovation, special colours, exclusive designs. Collections exist already for many years and you always will have the best attention from architects.

- products have a long life time.
- the satisfaction from a Van Besouw customer is very high.
- in Europe Van Besouw is very well established as brandname.

- the knitting technique gives a unique look and feel.
- Van Besouw is the only company worldwide with knitting looms.
- products from besouw appeals to a special feeling and growing need in the top of the market for sophistication.
- if you like it : you will be passionate.



the tradition



eye for detail



the origin



dutch design



made in holland



pure materials



high quality



craftmanship



inspiration



Unique in the world: raschel knitted carpets

craftsmanship and design Excellence since 1839

Van Besouw has been around for a long time now: the company dates from 1839. In more than a century and a half, the company grew from weaving jute mailbags into being a leading supplier of contemporary carpets. How things can change!

Product innovation came - unexpected - during World War II. By then, Van Besouw had started producing rugs. The usual raw materials had become scarce. Then the social innovator's

grandson, also called Jan, built a mill for spinning paper. Used paper could be spun into yarn, which was woven into rugs. Today, using paper yarns is considered very innovative. Take note! The tone for Van Besouw's futures has been set. The key innovation comes in 1967, by which time Van Besouw has become a carpet factory. A move away from the trodden path: Van Besouw starts making carpets that are not made anywhere else.

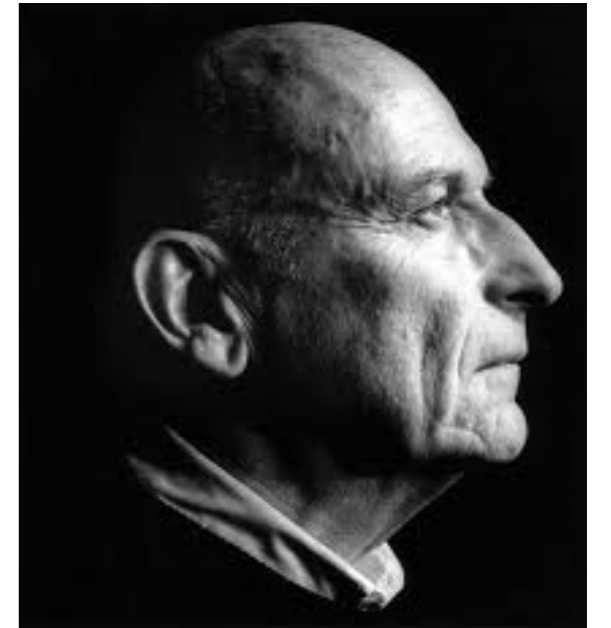
industrial design

Benno Premsele

Led by the industrial designer Benno Premsele, a new and innovative collection is produced, with cotton loop carpet 3801 as an icon. The 3801 is often copied later but never equalled. 'Creating rather than imitating' becomes the motto. Over forty years later, Van Besouw still is a renowned innovator. Craftsmanship is combined with modern technology. Clever inventions help create high-tech aesthetics. Van Besouw is ready for the future.

Creating above imitating

'Creating rather than imitating' becomes the motto. Over forty years later, Van Besouw still is a renowned innovator. Craftsmanship is combined with modern technology.



Raschel knitted cotton 3801

cotton



cotton

The raschel knitted handwriting

Led by the industrial designer Benno Premsele, a new and innovative collection is produced, with cotton loop carpet 3801 as an icon. The 3801 is often copied later but never equalled.

Features cotton

- very resistant
- good to colour
- skin friendly
- moisture absorbing
- matte colour
- nature product, nature feeling



Raschel knitting

The piles are falling down in all directions. This is impossible in tufted carpets. Besides the high quality level of this production method, The "writing character" is one of the most beautiful things of this kind of carpets.

project



project Vital Carpets for contract use

Healthy Carpets. This sound probably it bit strange, but it's reality. Carpets are good for health (working)space.

Fine dust

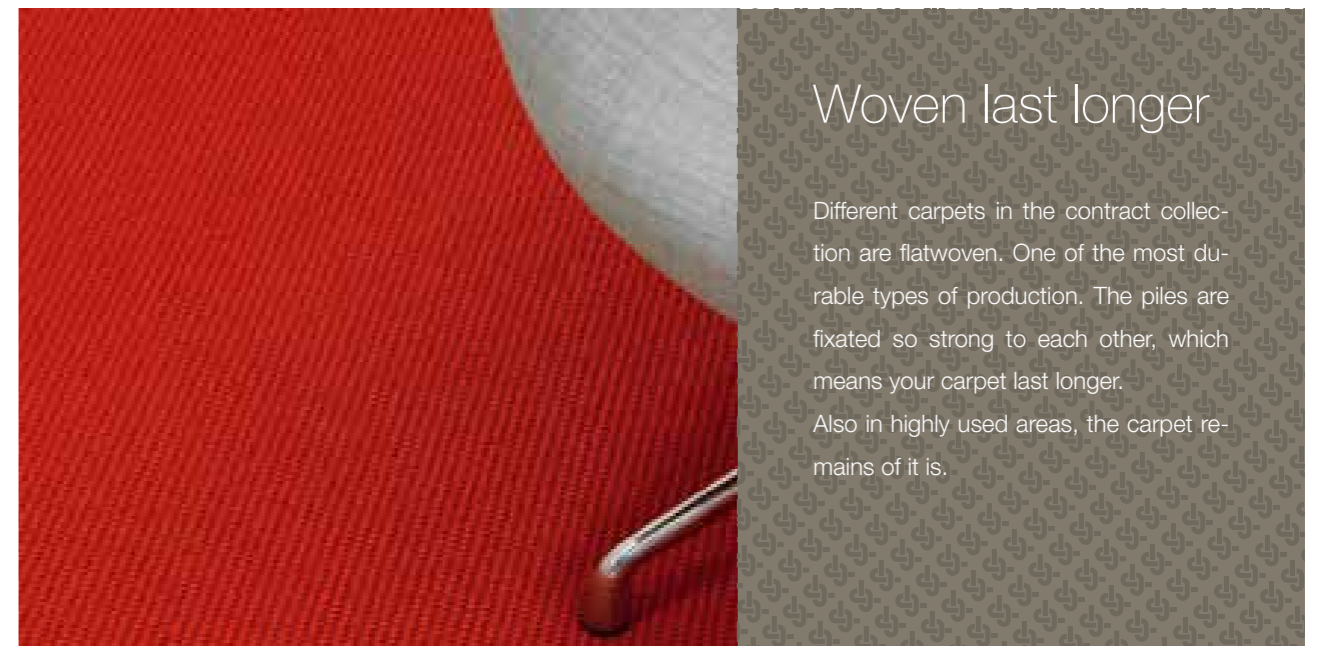
Everywhere is fine dust. If you can reduce the amount of this dust, your environment is feeling more comfortable, more healthy.

A carpet is giving you a lot of benefits, compared to hard floors. By hard floors, the fine dust is swirling through the space. But carpets are keeping the dust into the piles. Until the space is vacuumed. Of course you have to vacuum the carpet, frequently.



Woven last longer

Different carpets in the contract collection are flatwoven. One of the most durable types of production. The piles are fixated so strong to each other, which means your carpet last longer. Also in highly used areas, the carpet remains of it is.



specials



specials flavour of flooring textiles

Van Besouw loves textiles. Even more we love special carpets, creative colorpalettes and beautiful finishes.

Every space the right character

The special collection is a big chance, to give very space the right character.

Ideas enough. We think in materials, textures and colors. As soon as interesting materials are found, we look at the possible applications; in which production way can we make this. A moodboard follows. Thereafter a color proposal. And in the meantime, of course, the necessary (production)tests.

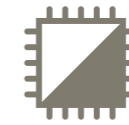


Trending: volume rugs

The soft qualities in the Van Besouw program are extremely suitable for volume rugs (folded edges).

The pile is made of 100% Polyamide Silk Look yarn. Due to a high and full pool deck, this qualities has a voluminous and luxurious appearance.

carpettiles



carpettiles

Biophilic flooring design

Nature is the fountain of our inspiration. Impressive structures from the natural world are transformed into artwork in carpet tiles. Van Besouw a creative union of nature and innovative flooring!

ECONYL® yarn; 100% regenerated

The ECONYL® fiber made from pre- and post-consumer Nylon 6 waste, such as fishingnets and other material.

ECONYL® Carpet fibers are made for architects, builders and designers looking for synthetic floor covering that aim to protect the future of our earth. They are included on the list of materials eligible for LEED® points (Leadership in Energy and Environmental Design) as part of the definition of worldwide standards for eco-friendly buildings.

For more information, please visit www.econyl.com.



Vital Spaces

The indoor spaces need to be healthy, because you are spending most of your time there. Van Besouw Carpet Tiles are your important partner as airfilters. Dust particles will be captured and retained until vacuuming during daily maintenance.


 wool


wool

Luxurious high-end carpet

Wondering wool. That's the combination of Van Besouw and the wool fibre. Woven and raschel knitted. Thick luxurious or strong flat contract carpet. You can find it all in Van Besouw's wool collection.

Wondering wool by wealth and diversity

romantic	vs.	architectonic
traditional	vs.	innovative
artisan	vs.	industrial
soft	vs.	hard
warm	vs.	cool
robust	vs.	refined
luxury	vs.	simplicity
elegant	vs.	sturdy



1 8 0 3

wool raschel
knitted

2 4 0 1

polya-
mide woven

Named figures

Van Besouw gives never names to the carpets. A but quirky, but with a reason: Names are associative.

But the numbers are not choosen randomly. For example, the first figure is for the material, the second for the way of production. The last two figures are the serial number.



van besouw

Productoverview

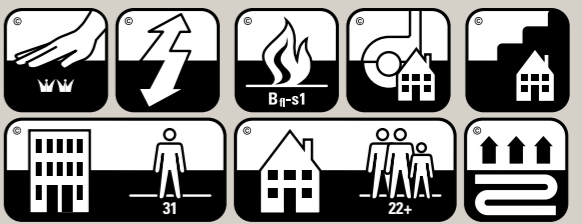


010	020	130	240
350	570	620	650

BENEFITS

- the special looping method of the luxury yarn creates the characteristic knotted nap.
- new Zealand wool
 - > highest quality wool
 - > soft, luxurious fibre
 - > rich, deep colours
- wide range of applications (see characteristics)
- highly suitable as a custom area rug
 - > rugs are supplied with a standard comfortable extra anti-slip backing
- easily workable; longitudinal seams can be laid invisibly. Download the installation recommendations for more information
- available in custom colours from 480 m2

SYMBOLS



FACTS

- Type of manufacture: woven
- Pile material: 100% new zealand wool
- Back: bio jute
- Total thickness: 9,7 mm
- Pile weight: 1825 g/m2
- Width: 400 cm

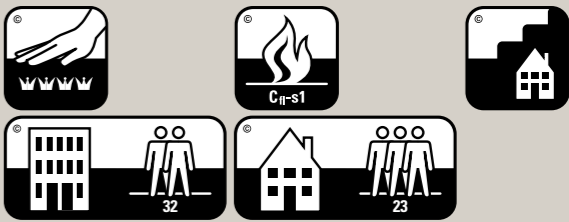


020	030	190	200
270	290	310	410
520	605	610	630

BENEFITS

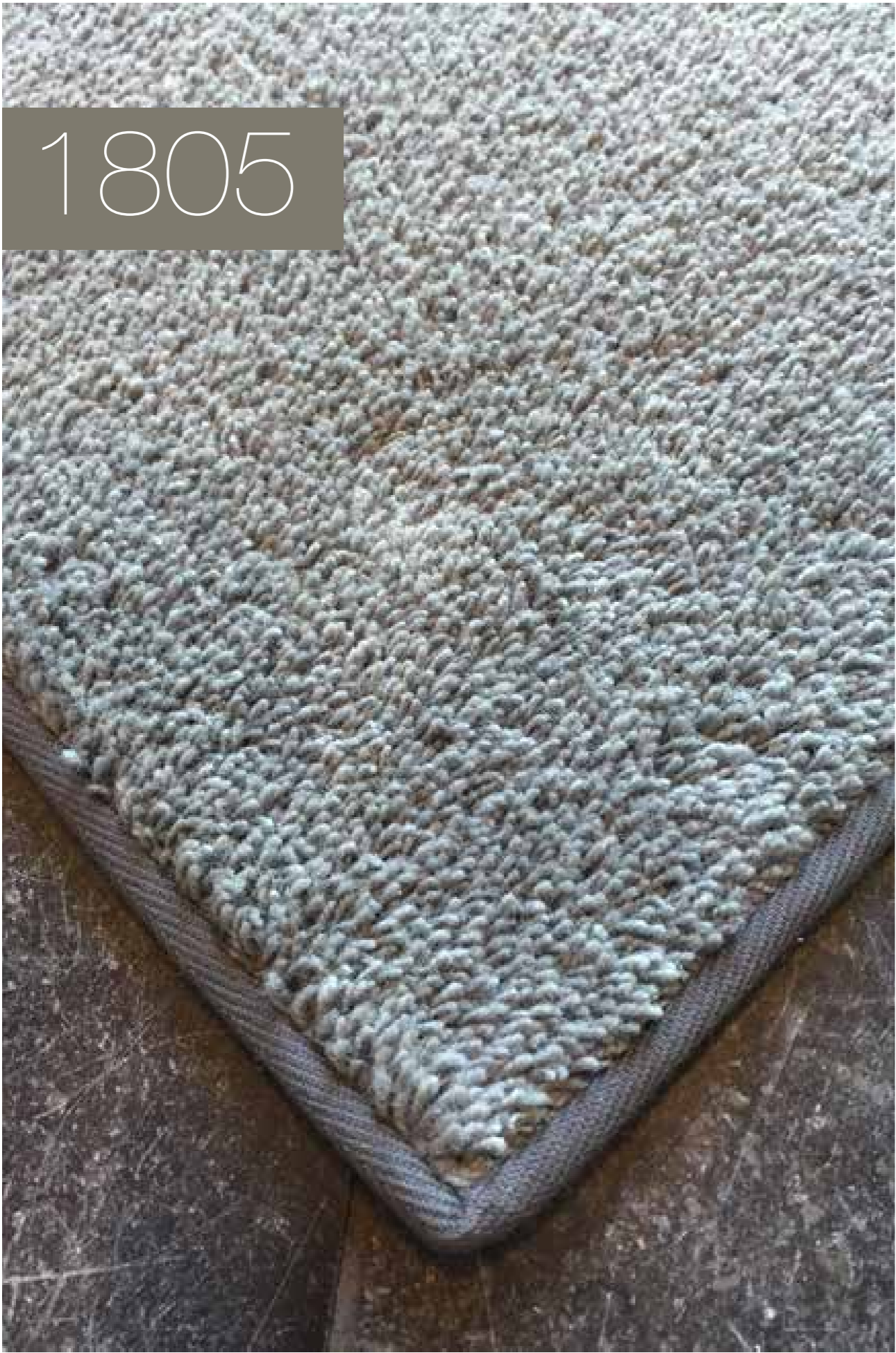
- The cotton loop has long been a well-known Van Besouw phenomenon. The 1803 is the woollen derivate of that. The high pile weight with the characteristic Van Besouw loop creates a super-de-luxe carpet.
- 100% wool
 - > highest quality wool
 - > soft, luxurious fibre
 - > rich, deep colours
 - wide range of applications (see characteristics)
- highly suitable as a custom area rug
 - > rugs are supplied with a standard comfortable extra anti-slip backing
- Easily workable; longitudinal and crosswise seams can be laid invisibly. Download the installation recommendations for more information
- available in custom colours from 200 m2

SYMBOLS

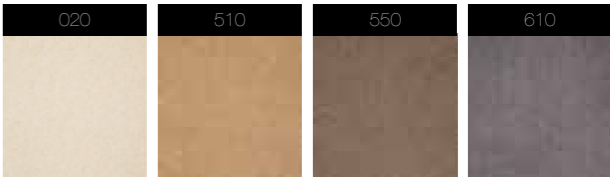


FACTS

- Type of manufacture: raschel knitted
- Pile material: 100% wool
- Back: jute
- Total thickness: 11,2 mm
- Pile weight: 1400 g/m2
- Width: 400 cm



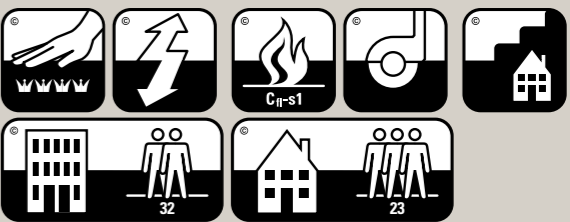
1805



BENEFITS

- The best of all worlds. It is, in fact, no twist or velour, but a combination of all. Because the carpet is knitted the pills are falling in all directions
- > tip: to see this effect well please ask for a bigger sample
- 100% wool
 - > highest quality wool
 - > soft, luxurious fibre
 - > rich, deep colourswide range of applications (see characteristics)
- highly suitable as a custom area rug
 - > click on carpet finish for the options
 - > rugs are supplied with a standard comfortable extra anti-slip backing
- easily workable; longitudinal seams can be installed invisibly. Download the installation recommendations for more information
- available in custom colours from 480 m2

SYMBOLS



FACTS

- Type of manufacture: raschel knitted
- Pile material: 100% wool
- Back: non woven
- Total thickness: 10 mm
- Pile weight: 1525 g/m2
- Width: 400 cm

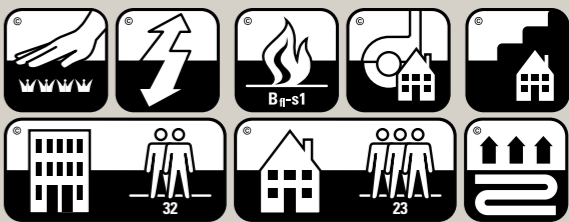


010	030	040	230
320	350	370	410
510	540	610	620
630	640	650	

BENEFITS

- The most beautiful wool yarn in a knitted carpet makes the most beautiful velour carpet. Just look at the fine pinpoint
- 100% wool
 - > highest quality wool
 - > soft, luxurious fibre
 - > rich, deep colours
 - wide range of applications (see characteristics)
- highly suitable as a custom area rug
 - > rugs are supplied with a standard comfortable extra anti-slip backing
- easily workable; longitudinal seams can be laid invisibly. Download the installation recommendations for more information
- available in custom colours from 200 m2

SYMBOLS



FACTS

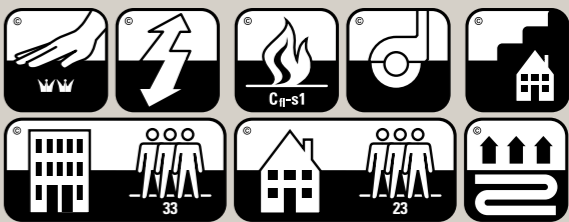
- Type of manufacture: raschel knitted
- Pile material: 100% wool
- Back: synthetic
- Total thickness: 9,3 mm
- Pile weight: 1350 g/m2
- Width: 400 cm



BENEFITS

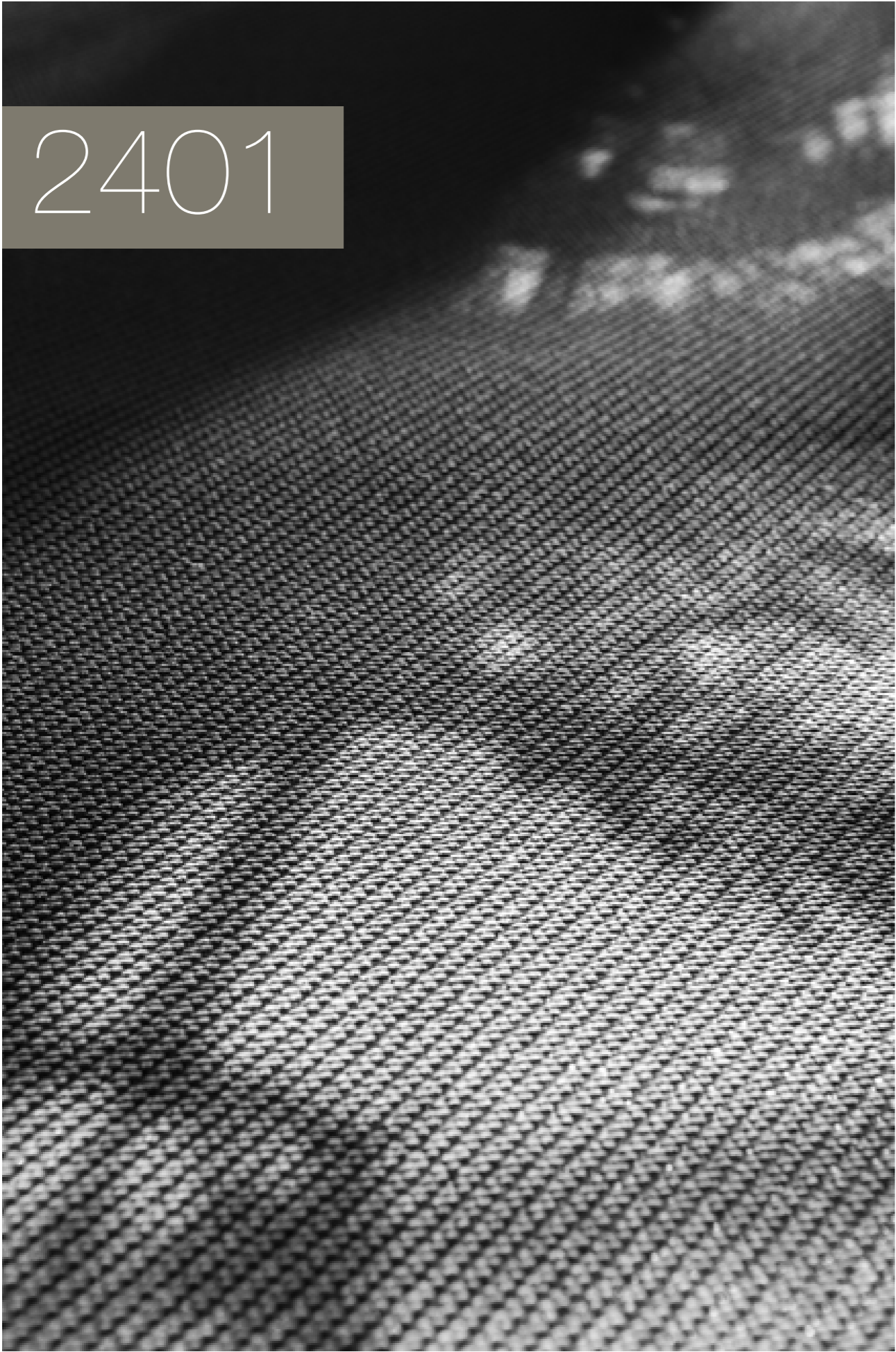
- the combination of the material, structure and manufacture creates a completely unique product
- 100% wool
 - > highest quality wool
 - > soft, luxurious fibre
 - > rich, deep colours
 - wide range of applications (see characteristics)
- highly suitable as a custom area rug
 - > rugs are supplied with a standard comfortable extra anti-slip backing
- easily workable; longitudinal seams can be installed invisibly. Download the installation recommendations for more information
- available in custom colours from 200 m2

SYMBOLS



FACTS

- Type of manufacture: raschel knitted
- Pile material: 100% wool
- Back: non woven
- Total thickness: 10 mm
- Pile weight: 1175 g/m2
- Width: 400 cm



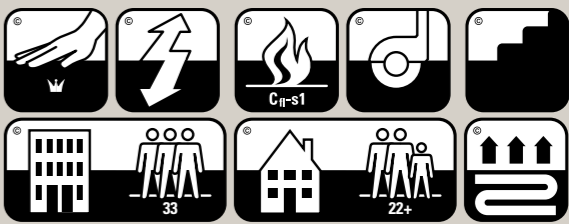
2401



BENEFITS

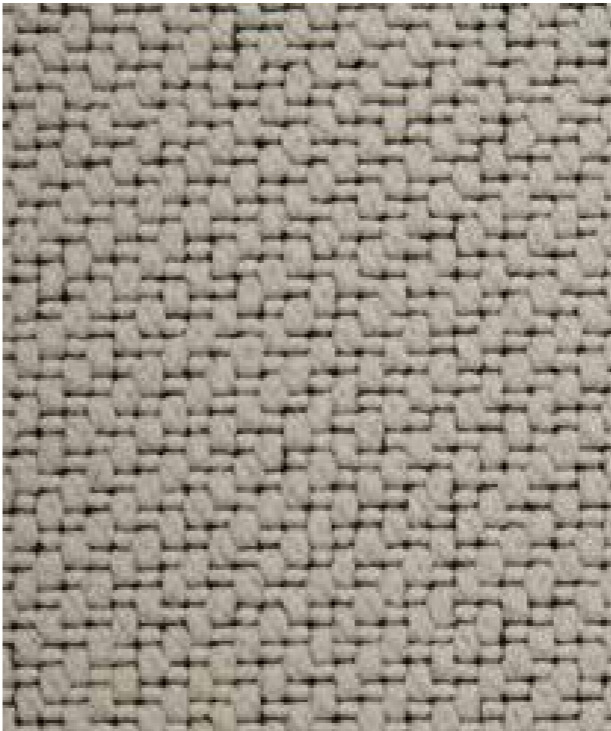
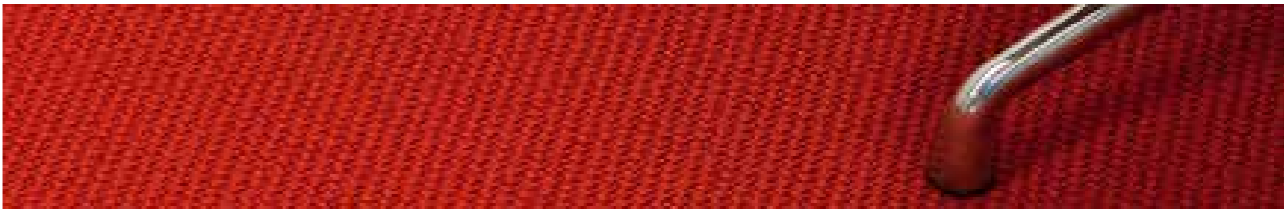
- perfectly suitable for intensively used areas due to the combination of the polyamide fibre and tight even weave
- polyamide
 - > very strong fibre
 - > easy to clean and maintain
 - > long lifespan
 - > very durable
- wide range of applications (see characteristics)
- highly suitable as a custom area rug
 - > rugs are supplied with a standard comfortable extra anti-slip backing
- easily workable; longitudinal seams can be installed invisibly. Download the installation recommendations for more information
- available in custom colours from 120 m2

SYMBOLS



FACTS

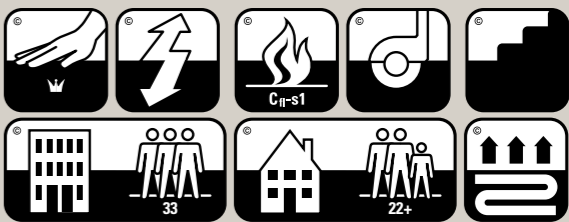
- Type of manufacture: woven
- Pile material: 100% polyamide 6
- Back: synthetic
- Total thickness: 6 mm
- Pile weight: 900 g/m2
- Width: 400 cm



BENEFITS

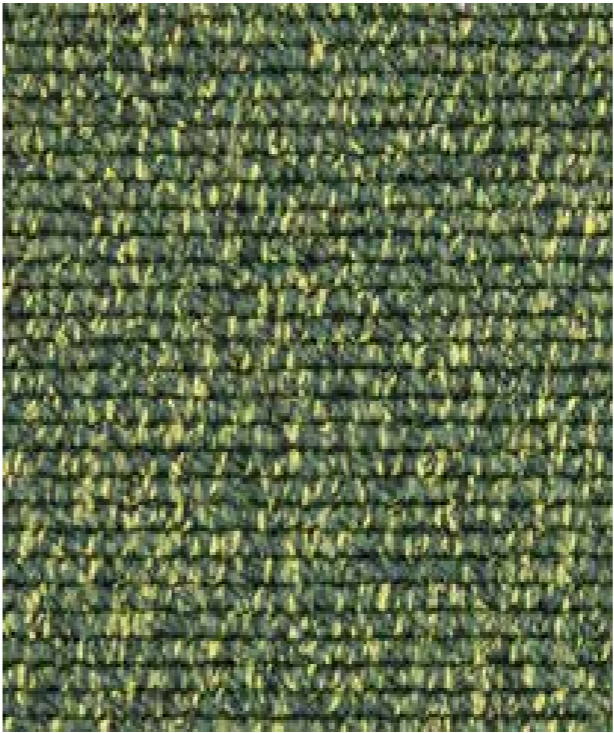
- perfectly suitable for intensively used areas due to the combination of the polyamide fibre and tight even weave
- polyamide
 - > very strong fibre
 - > easy to clean and maintain
 - > long lifespan
 - > very durable
- wide range of applications (see characteristics)
- highly suitable as a custom area rug
 - > rugs are supplied with a standard comfortable extra anti-slip backing
- easily workable; longitudinal seams can be installed invisibly. Download the installation recommendations for more information
- available in custom colours from 120 m2

SYMBOLS



FACTS

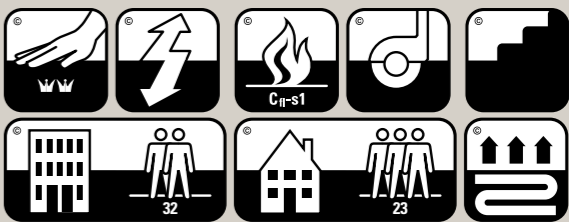
- Type of manufacture: woven
- Pile material: 100% polyamide 6
- Back: synthetic
- Total thickness: 6 mm
- Pile weight: 900 g/m2
- Width: 400 cm



BENEFITS

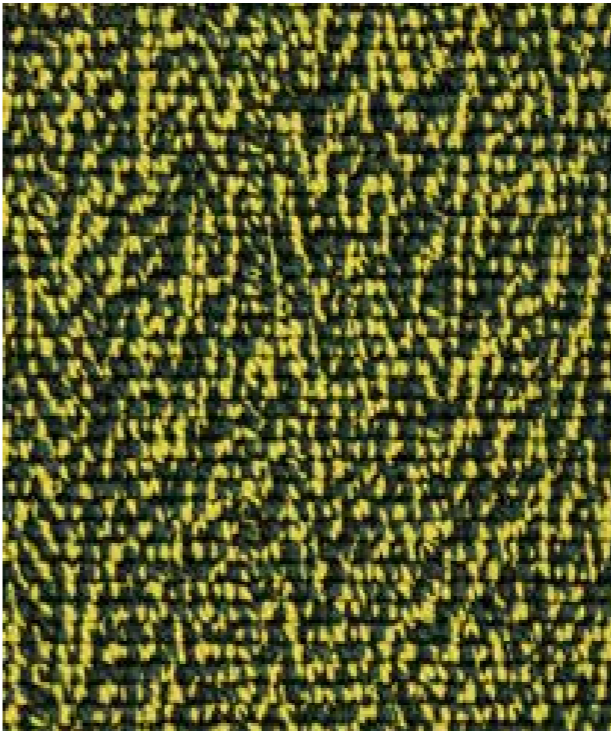
- perfectly suitable for intensively used areas due to the combination of the polyamide fibre and tight even weave
- very modern look and feel because of the minimalistic combination of three twisted colours
- polyamide
 - > very strong fibre
 - > easy to clean and maintain
 - > long lifespan
 - > very durable
- wide range of applications (see characteristics)
- highly suitable as a custom area rug
 - > rugs are supplied with a standard comfortable extra anti-slip backing

SYMBOLS



FACTS

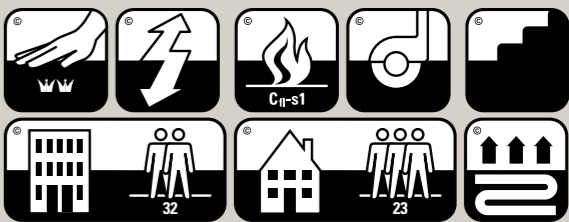
- Type of manufacture: woven
- Pile material: 100% polyamide 6 Econyl
- Back: synthetic
- Total thickness: 8,1 mm
- Pile weight: 1500 g/m2
- Width: 400 cm



BENEFITS

- perfectly suitable for intensively used areas due to the combination of the polyamide fibre and tight even weave
- very modern look and feel because of the minimalistic combination of three twisted colours
- polyamide
 - > very strong fibre
 - > easy to clean and maintain
 - > long lifespan
 - > very durable
- wide range of applications (see characteristics)
- highly suitable as a custom area rug
 - > rugs are supplied with a standard comfortable extra anti-slip backing

SYMBOLS



FACTS

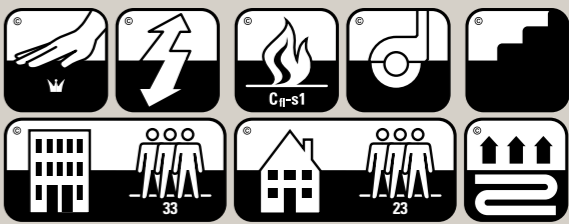
- Type of manufacture: woven
- Pile material: 100% polyamide 6 Econyl
- Back: synthetic
- Total thickness: 8,1 mm
- Pile weight: 1500 g/m2
- Width: 400 cm



BENEFITS

- perfectly suitable for intensively used areas due to the combination of the polyamide fibre and tight even weave
- polyamide 6,6 ultron
 - > very strong fibre
 - > easy to clean and maintain
 - > long lifespan
 - > very durable
- wide range of applications (see characteristics)
- highly suitable as a custom area rug
 - > rugs are supplied with a standard comfortable extra anti-slip backing
- easily workable; longitudinal seams can be installed invisibly. Download the installation recommendations for more information
- available in custom colours from 200 m2

SYMBOLS



FACTS

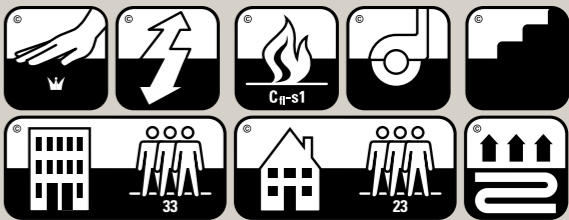
- Type of manufacture: woven
- Pile material: 100% polyamide 6.6 Ultron
- Back: synthetic
- Total thickness: 6 mm
- Pile weight: 600 g/m2
- Width: 400 cm



BENEFITS

- perfectly suitable for intensive use due to the combination of the polyamide fibres and strong pile adhesion
the distinctive 'space' is not dyed. The lighter the colour, the more it catches the eye. This effect is barely visible with very deep colours
- polyamide
 - > very strong fibre
 - > easy to clean and maintain
 - > long lifespan
 - > very durable
- wide range of applications (see characteristics)
- highly suitable as a custom area rug
 - > rugs are supplied with a standard comfortable extra anti-slip backing
- easily workable; longitudinal seams can be installed invisibly. Download the installation recommendations for more information
- available in custom colours from 200 m2

SYMBOLS



FACTS

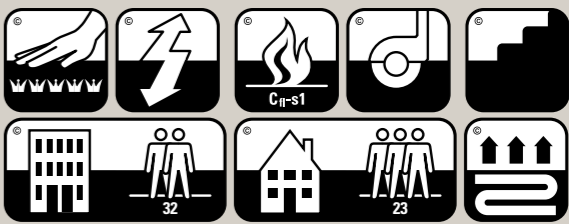
- Type of manufacture: woven
- Pile material: 100% polyamide 6.6 Ultron
- Back: synthetic
- Total thickness: 6 mm
- Pile weight: 600 g/m2
- Width: 400 cm



BENEFITS

- ultimate comfort. That is 2605. The polyamide ultra-soft yarn makes it soft to the touch. The shiny yarn gives the carpet an exceptional visual effect
- perfectly suitable for intensive use due to the combination of the polyamide fibres and strong pile adhesion
- polyamide
 - > very strong fibre
 - > easy to clean and maintain
 - > long lifespan
 - > very durable
- wide range of applications (see characteristics)
- highly suitable as a custom area rug
 - > rugs are supplied with a standard comfortable extra anti-slip backing
 - > also available as volume rugs (folded edges)
- available in custom colours from 300 m2

SYMBOLS



FACTS

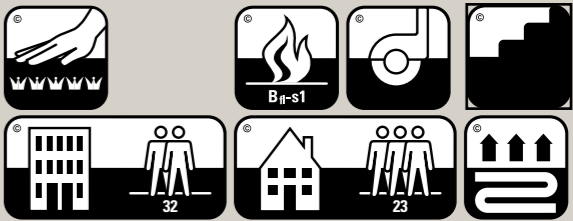
- Type of manufacture: tufted
- Pile material: 100% polyamide ultra soft
- Back: synthetic
- Total thickness: 10,7 mm
- Pile weight: 1780 g/m2
- Width: 400 cm



BENEFITS

- ultimate comfort. That is 2606. The polyamide ultra-soft yarn makes it soft to the touch. The shiny yarn gives the carpet an exceptional visual effect
- perfectly suitable for intensive use due to the combination of the polyamide fibres and strong pile adhesion
- polyamide
 - > very strong fibre
 - > easy to clean and maintain
 - > long lifespan
 - > very durable
- wide range of applications (see characteristics)
- highly suitable as a custom area rug
 - > rugs are supplied with a standard comfortable extra anti-slip backing
 - > also available as volume rugs (folded edges)
- available in custom colours from 300 m2

SYMBOLS



FACTS

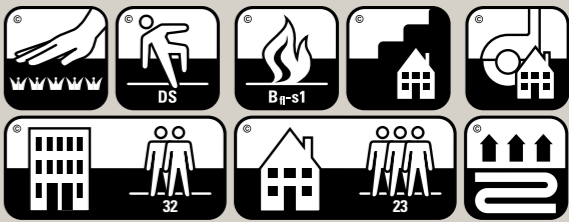
- Type of manufacture: tufted
- Pile material: 100% polyamide ultra soft
- Back: soft synthetic
- Total thickness: 14,2 mm
- Pile weight: 2480 g/m2
- Width: 400 cm



BENEFITS

- ultimate comfort. That is 2607. The polyamide ultra-soft yarn makes it soft to the touch. The shiny yarn gives the carpet an exceptional visual effect
- perfectly suitable for intensive use due to the combination of the polyamide fibres and strong pile adhesion
- polyamide
 - > very strong fibre
 - > easy to clean and maintain
 - > long lifespan
 - > very durable
- wide range of applications (see characteristics)
- highly suitable as a custom area rug
 - > rugs are supplied with a standard comfortable extra anti-slip backing
 - > also available as volume rugs (folded edges)
- available in custom colours from 400 m2

SYMBOLS



FACTS

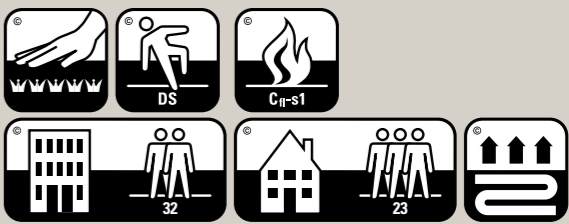
- Type of manufacture: tufted
- Pile material: 100% polyamide ultra soft
- Back: soft synthetic
- Total thickness: 10,4 mm
- Pile weight: 2300 g/m2
- Width: 400 cm



BENEFITS

- the 2608 is carpet with an impressive high pile weight! This provides an ultra-soft and voluminous result. A feast for the feet.
- perfectly suitable for intensive use due to the combination of the polyamide fibres and strong pile adhesion
- polyamide
 - > very strong fibre
 - > easy to clean and maintain
 - > long lifespan
 - > very durable
- wide range of applications (see characteristics)
- highly suitable as a custom area rug
 - > rugs are supplied with a standard comfortable extra anti-slip backing
 - > also available as volume rugs (folded edges)
- available in custom colours from 400 m2

SYMBOLS



FACTS

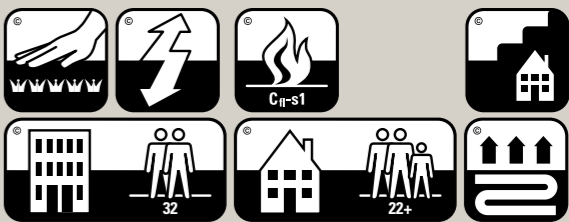
- Type of manufacture: tufted
- Pile material: 100% polyamide ultra soft
- Back: synthetic
- Total thickness: 16,9 mm
- Pile weight: 2850 g/m2
- Width: 400 cm



BENEFITS

- ultimate comfort. That is 2609. The polyamide ultra-soft yarn makes it soft to the touch. The shiny yarn gives the carpet an exceptional visual effect
- perfectly suitable for intensive use due to the combination of the polyamide fibres and strong pile adhesion
- polyamide
 - > very strong fibre
 - > easy to clean and maintain
 - > long lifespan
 - > very durable
- wide range of applications (see characteristics)
- highly suitable as a custom area rug
 - > rugs are supplied with a standard comfortable extra anti-slip backing
 - > also available as volume rugs (folded edges)
- available in custom colours from 400 m2

SYMBOLS



FACTS

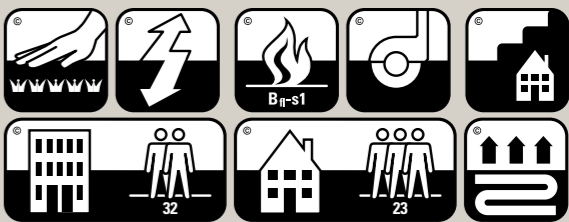
- Type of manufacture: tufted
- Pile material: 100% polyamide ultra soft
- Back: synthetisch
- Total thickness: 10.1 mm
- Pile weight: 1666 g/m2
- Width: 400 & 500 cm.



BENEFITS

- the 2610 is the best example of ultimate design, practical composition and wonderful comfort. Soft, shiny and comfortable. With the benefits of polyamide: durable and easy to maintain.
- perfectly suitable for intensive use due to the combination of the polyamide fibres and strong pile adhesion
- polyamide
 - > very strong fibre
 - > easy to clean and maintain
 - > long lifespan
 - > very durable
- wide range of applications (see characteristics)
- highly suitable as a custom area rug
 - > rugs are supplied with a standard comfortable extra anti-slip backing
 - > also available as volume rugs (folded edges)
- available in custom colours from 400 m2

SYMBOLS



FACTS

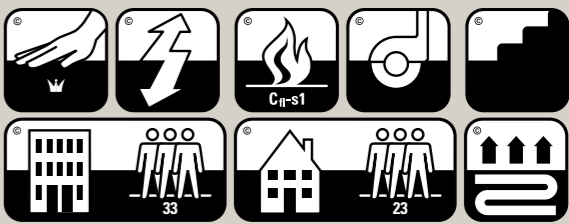
- Type of manufacture: tufted
- Pile material: 100% polyamide ultra soft 6.6 Slik Look
- Back: soft synthetisch
- Total thickness: 12 mm
- Pile weight: 2265 g/m2
- Width: 400 cm



BENEFITS

- perfectly suitable for intensive use due to the combination of the polyamide fibres and strong pile adhesion
- polyamide
 - > very strong fibre
 - > easy to clean and maintain
 - > long lifespan
 - > very durable
- wide range of applications (see characteristics)
- highly suitable as a custom area rug
 - > rugs are supplied with a standard comfortable extra anti-slip backing
- available in custom colours from 400 m2

SYMBOLS



FACTS

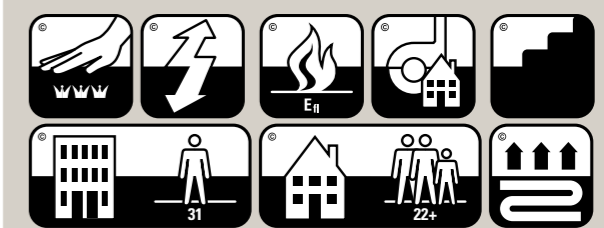
- Type of manufacture: raschel knitted
- Pile material: 100% polyamide 6
- Back: non woven
- Total thickness: 7 mm
- Pile weight: 675 g/m2
- Width: 400 cm



BENEFITS

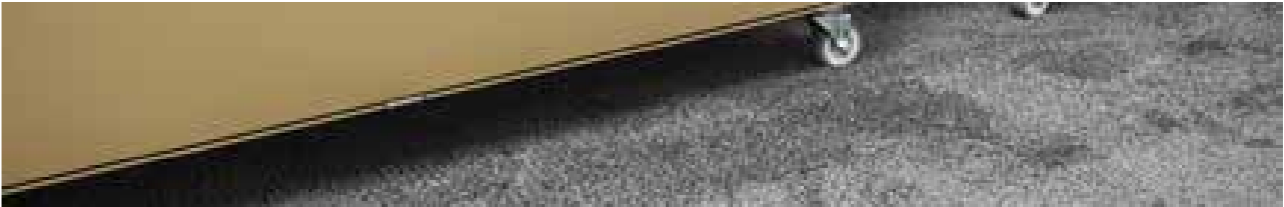
- cotton is a very strong fibre and therefore perfectly suitable for intensively used spaces
- knitting with cotton, that is what made Van Besouw famous. The 3801 is a timeless design classic that never gets boring
- note its fluid character through the combination of the fibre and knitting technique. The longer the carpet is used the more beautiful it becomes
- cotton
 - > very strong fibre
 - > matt appearance
 - > long lifespan
- highly suitable as a custom area rug
 - > rugs are supplied with a standard comfortable extra anti-slip backing
- available in custom colours from 400 m2

SYMBOLS



FACTS

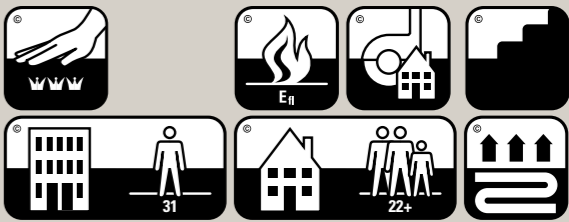
- Type of manufacture: raschel knitted
- Pile material: 100% cotton
- Back: Jute
- Total thickness: 7,6 mm
- Pile weight: 1400 g/m²
- Width: 400 cm



BENEFITS

- cotton is a very strong fibre and therefore perfectly suitable for intensively used spaces
- The tricolour pile works as a solid colour, whereby the carpet perfect complements the other colours in an interior
- knitting with cotton, that is what made Van Besouw famous. The 3802 is a timeless design classic that never gets boring
- note its fluid character through the combination of the fibre and knitting technique. The longer the carpet is used the more beautiful it becomes
- cotton
 - > very strong fibre
 - > matt appearance
 - > long lifespan
- highly suitable as a custom area rug
 - > rugs are supplied with a standard comfortable extra anti-slip backing

SYMBOLS



FACTS

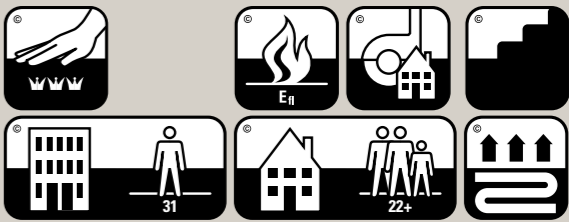
- Type of manufacture: raschel knitted
- Pile material: 100% cotton
- Back: non woven
- Total thickness: 7,5 mm
- Pile weight: 1800 g/m2
- Width: 400 cm



BENEFITS

- cotton is a very strong fibre and therefore perfectly suitable for intensively used spaces
- knitting with cotton, that is what made Van Besouw famous. The 3805 is a timeless design classic that never gets boring
- note its fluid character through the combination of the fibre and knitting technique. The longer the carpet is used the more beautiful it becomes
- cotton
 - > very strong fibre
 - > matt appearance
 - > long lifespan
- highly suitable as a custom area rug
 - > rugs are supplied with a standard comfortable extra anti-slip backing
- available in custom colours from 400 m2

SYMBOLS

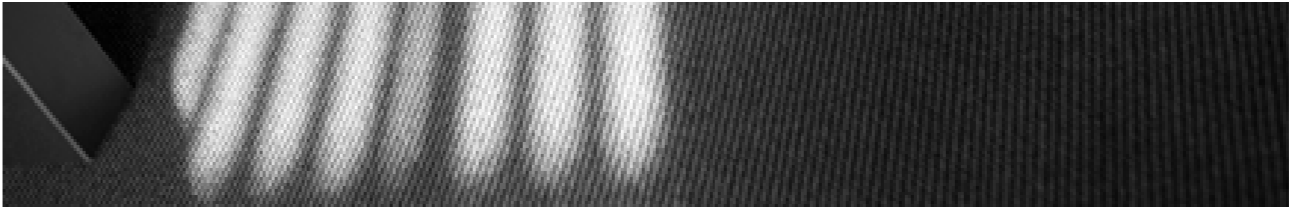


FACTS

- Type of manufacture: raschel knitted
- Pile material: 100% cotton
- Back: Jute
- Total thickness: 8,9 mm
- Pile weight: 1200 g/m2
- Width: 400 cm



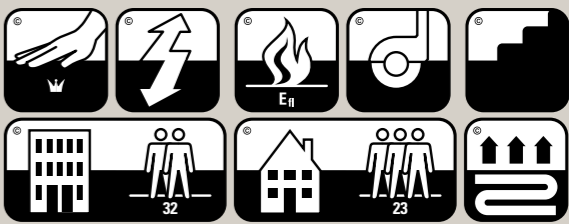
3808



BENEFITS

- inspired by the Dutch fields, as seen from the air. The result, a characteristic, knitted cable structure
- cotton is a very strong fibre and therefore perfectly suitable for intensively used spaces
- knitting with cotton, that is what made Van Besouw famous. The 3808 is a timeless design classic that never gets boring
- cotton
 - > very strong fibre
 - > matt appearance
 - > long lifespan
- wide range of applications (see characteristics)
- highly suitable as a custom area rug
 - > rugs are supplied with a standard comfortable extra anti-slip backing
- available in custom colours from 400 m2

SYMBOLS



FACTS

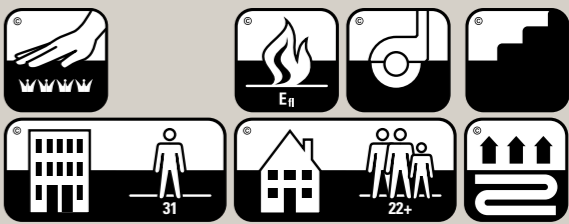
- Type of manufacture: raschel knitted
- Pile material: 100% cotton
- Back: non woven
- Total thickness: 4,8 mm
- Pile weight: 325 g/m2
- Width: 400 cm



BENEFITS

- inspired by the Dutch fields, as seen from the air. The result, a characteristic, knitted cable structure
- knitting with cotton, that is what made Van Besouw famous. The 3809 is a timeless design classic that never gets boring
- note its fluid character through the combination of the fibre and knitting technique. The longer the carpet is used the more beautiful it becomes
- cotton
 - > very strong fibre
 - > matt appearance
 - > long lifespan
- highly suitable as a custom area rug
 - > rugs are supplied with a standard comfortable extra anti-slip backing
- available in custom colours from 400 m2

SYMBOLS

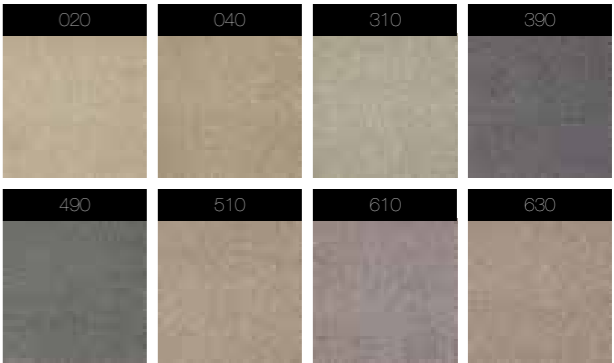


FACTS

- Type of manufacture: raschel knitted
- Pile material: 100% cotton
- Back: non woven
- Total thickness: 7,9 mm
- Pile weight: 1 125 g/m2
- Width: 400 cm



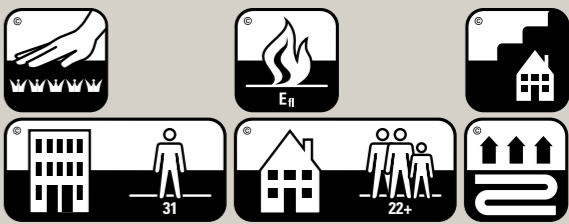
3810



BENEFITS

- cotton is a very strong fibre and therefore perfectly suitable for intensively used spaces
- knitting with cotton, that is what made Van Besouw famous.
- note its fluid character through the combination of the fibre and knitting technique. The longer the carpet is used the more beautiful it becomes
- cotton
 - > very strong fibre
 - > matt appearance
 - > long lifespan
- wide range of applications (see characteristics)
- highly suitable as a custom area rug
 - > rugs are supplied with a standard comfortable extra anti-slip backing
- available in custom colours from 400 m2

SYMBOLS



FACTS

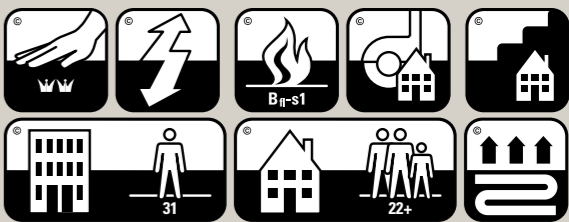
- Type of manufacture: raschel knitted
- Pile material: 100% cotton
- Back: cotton
- Total thickness: 11,7 mm
- Pile weight: 2700 g/m2
- Width: 400 cm



BENEFITS

- cotton is a very strong fibre and therefore perfectly suitable for intensively used spaces
- The tricolour pile works as a solid colour, whereby the carpet perfect complements the other colours in an interior
- knitting with cotton, that is what made Van Besouw famous.
- note its fluid character through the combination of the fibre and knitting technique. The longer the carpet is used the more beautiful it becomes
- cotton
 - > very strong fibre
 - > long lifespan
 - > matt appearance
- highly suitable as a custom area rug
 - > rugs are supplied with a standard comfortable extra anti-slip backing
- available in custom colours from 400 m2

SYMBOLS



FACTS

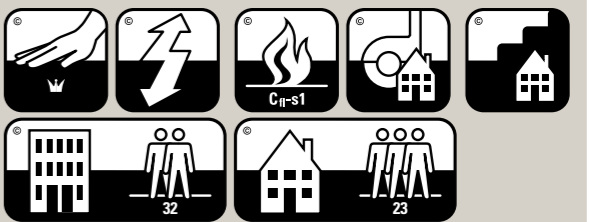
- Type of manufacture: raschel knitted
- Pile material: 100% cotton
- Back: non woven
- Total thickness: 11,6 mm
- Pile weight: 2200 g/m2
- Width: 400 cm



BENEFITS

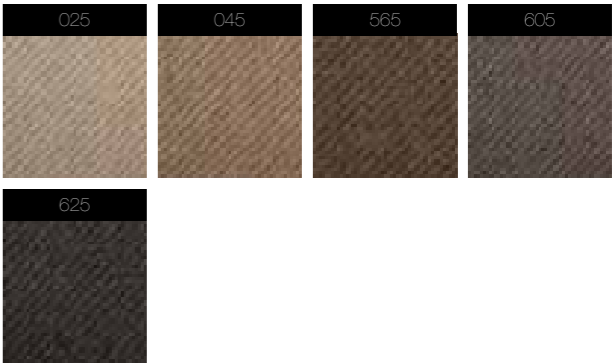
- an exceptionally strong combination: wool with goats' hair. And above all, the goats' hair gives that extra dimension to the look and feel of this carpet
- the production method says it all: flat weave. A tightly woven carpet making it suitable for a wide range of applications
- combination of yarns
 - > wool is natural
 - > matt appearance
 - > goats' hair is strong and reinforces the natural look
 - > long lifespanwide range of applications (see characteristics)
- highly suitable as a custom area rug
 - > rugs are supplied with a standard comfortable extra anti-slip backing
- available in custom colours from 1060 m2

SYMBOLS



FACTS

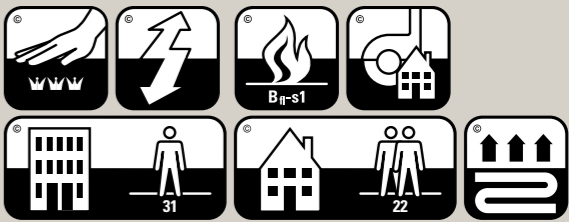
- Type of manufacture: woven
- Pile material: 50% wool / 50% goat's hair
- Back: bio jute
- Total thickness: 7,1 mm
- Pile weight: 1425 g/m2
- Width: 400 cm



BENEFITS

- The fibre used is 100% natural: 0.0% dye is used to create the colour; it comes straight from the sheep and goat
- Characteristic diagonal structure: on the roll it runs from bottom left to top right
- Perfect combination of yarns: soft and luxurious
- mix of yarns
 - > luxurious fibre
 - > matt appearance
 - > long lifespan
- highly suitable as a custom area rug
 - > rugs are supplied with a standard comfortable extra anti-slip backing

SYMBOLS



FACTS

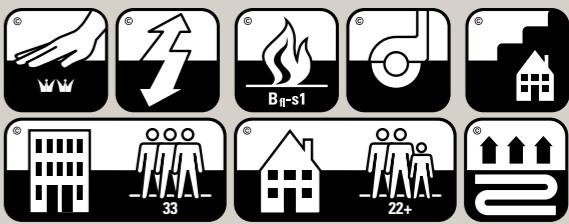
- Type of manufacture: woven
- Pile material: 80% wool / 20% cashmerehair
- Back: jute
- Total thickness: 9,3 mm
- Pile weight: 1350 g/m2
- Width: 400 cm



BENEFITS

- the mixture of wool and polyamide yarns is a basis offering many advantages. In particular the matt appearance and luxury of wool, combined with the strength of polyamide
- wilton woven products rarely need backing. This makes them highly flexible products that are easy to install
- it can be easily combined with 7402. The basis is exactly the same
- 80% wool / 20% polyamide
 - > strong combination
 - > matt appearance
 - > long lifespan
 - wide range of applications (see characteristics)
- highly suitable as a custom area rug
 - > rugs are supplied with a standard comfortable extra anti-slip backing
- available in custom colours from 400 m2

SYMBOLS



FACTS

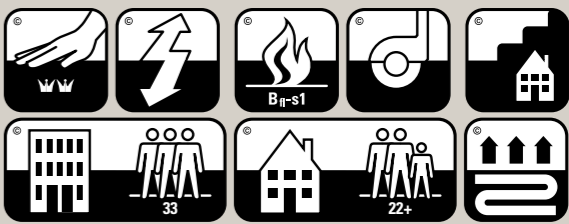
- Type of manufacture: wilton woven
- Pile material: 80 % wool / 20% polyamide
- Back: latex
- Total thickness: 6,5 mm
- Pile weight: 1210 g/m2
- Width: 390 cm



BENEFITS

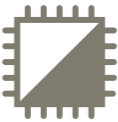
- the mixture of wool and polyamide yarns is a basis offering many advantages. In particular the matt appearance and luxury of wool, combined with the strength of polyamide
- wilton woven products rarely need backing. This makes them highly flexible products that are easy to install
- it can be easily combined with 7402. The basis is exactly the same
- 80% wool / 20% polyamide
 - > strong combination
 - > matt appearance
 - > long lifespan
 - wide range of applications (see characteristics)
- highly suitable as a custom area rug
 - > rugs are supplied with a standard comfortable extra anti-slip backing
- available in custom colours from 400 m2

SYMBOLS



FACTS

- Type of manufacture: wilton woven
- Pile material: 80 % wool / 20% polyamide
- Back: latex
- Total thickness: 6,5 mm
- Pile weight: 1210 g/m2
- Width: 390 cm

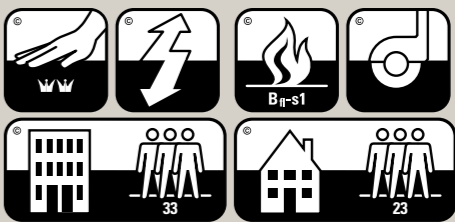


Download the product brochure for all (colour)options

BENEFITS

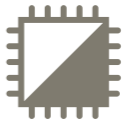
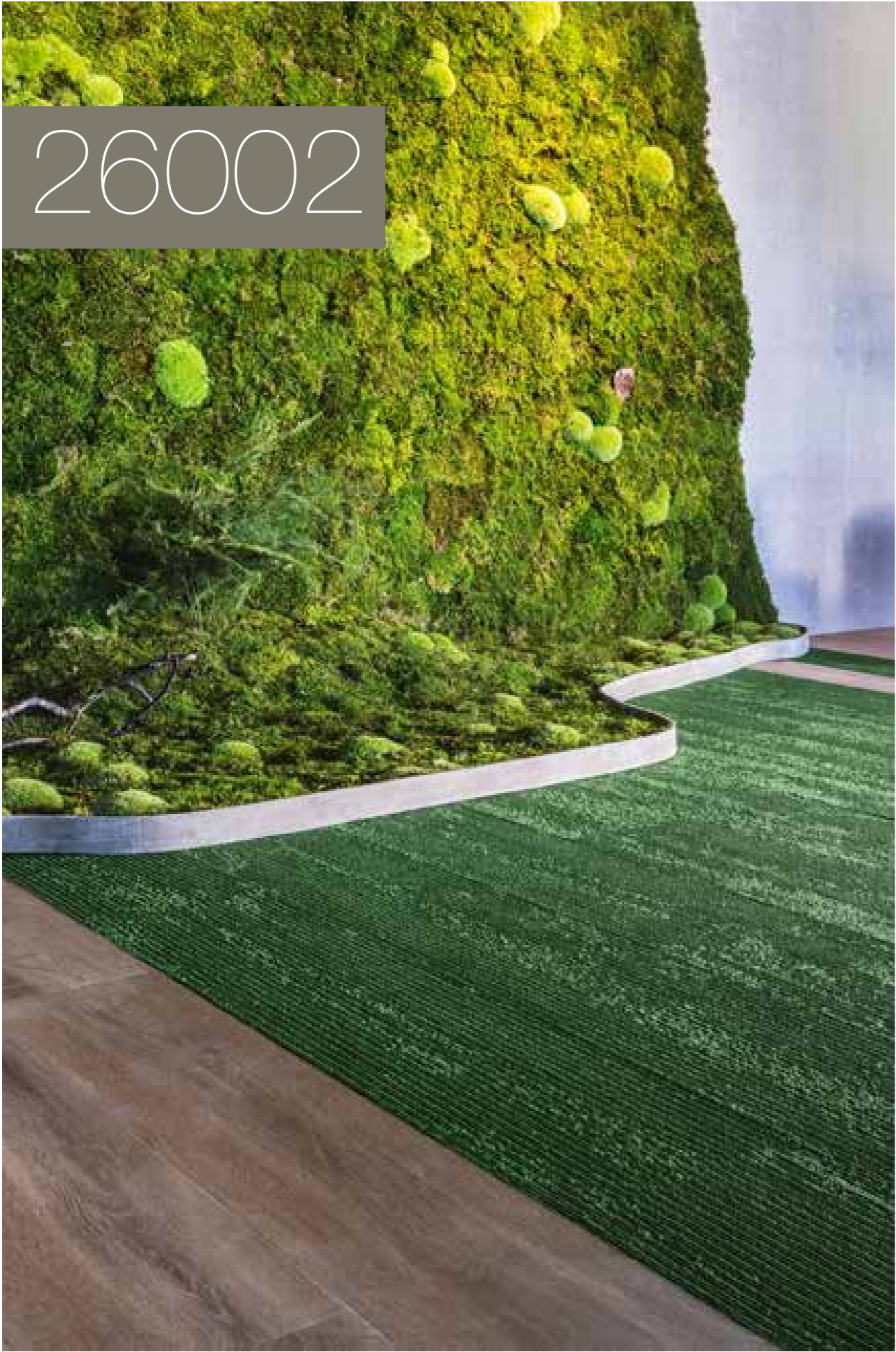
- Van Besouw introduces a collection of carpet tiles. A special collection where innovation takes precedence, both in design and technology.
- Biophilic design. Impressive structures from the natural world are transformed into artwork in carpet tiles Econyl yarn. The durable carpet tile. Now and in the future
- Creative colour concept. Download the brochure and see the creative possibilities
- Create every colour you want, with a minimum order quantity of 200 sqm
- Also available in broadloom carpet with a minimum order quantity of 200 sqm
- Standard available in 9 basic and 18 inspiration colours

SYMBOLS



FACTS

- Type of manufacture: Tufted
- Pile material: Econyl Polyamide 6
- Back: bitumen
- Pile weight: 775 g/m2
- Dimensions: 50x50 cm
- Packaging: 5 m² per box

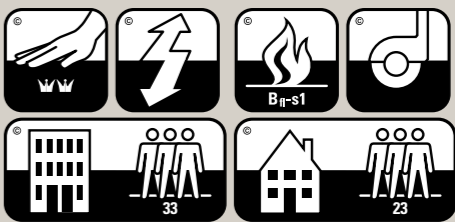


Download the product brochure for all (colour)options

BENEFITS

- Van Besouw introduces a collection of carpet tiles. A special collection where innovation takes precedence, both in design and technology.
 - Biophilic design. Impressive structures from the natural world are transformed into artwork in carpet tiles Econyl yarn. The durable carpet tile. Now and in the future
 - Creative colour concept. Download the brochure and see the creative possibilities
- Create every colour you want, with a minimum order quantity of 200 sqm
- Also available in broadloom carpet with a minimum order quantity of 200 sqm
 - Standard available in 9 basic and 18 inspiration colours

SYMBOLS



FACTS

- Type of manufacture: Tufted
- Pile material: Econyl Polyamide 6
- Back: bitumen
- Pile weight: 775 g/m2
- Dimensions: 25x100 cm
- Packaging: 2,5 m² per box



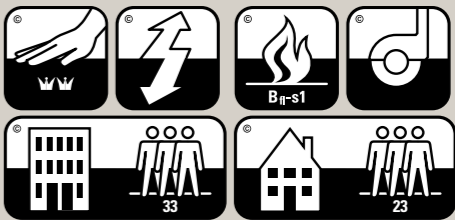
BENEFITS

- Durable and colour-resistant yarn-dyed polyamide yarn (solution dyed)
- large format tiles of 100x100 cm = efficient and fewer seams
- A very important advantage of the 26010 carpettiles is acoustic backing. The figures $\Delta L_w = 27$ dB, $\Delta L_{in} = 14$ dB

Combination of Van Besouw carpettiles (www.besouw.nl) and Therdex LooseLay (www.therdex.nl) give you unlimited possibilities to design with hard and soft floorcovering

- Perfectly to combine with the Therdex Loose Lay Series (www.therdex.nl)

SYMBOLS



FACTS

- Type of manufacture: Tufted
- Pile material: Solution Dyed Polyamide 6
- Back: acoustic felt
- Pile weight: 520 g/m²
- Dimensions: 100x100 cm
- Packaging: per piece



adress P.O. Box 102, 8280 AC Genemuiden (NL) telephone +31 (0) 38 385 8818 e-mail info@besouw.nl website www.besouw.nl