

 van  
besouw



Made in the Netherlands

every space the right character





van besouw magazine

# Contents

## Van Besouw

- 06 Excellence since 1839
- 08 DNA of Van Besouw
- 10 Craftsmanship & design

## Collection

- 12 Product groups
  - 12 cotton
  - 14 project
  - 16 specials
  - 18 wool
- 20 Product overview





design

your

life





van besouw carpets

## Headstrong, through and through

You can say that again. Van Besouw's unusual choice of fibres has stirred up the world of carpets more than once. The arrival of the first cotton carpet, the 3801, was nothing short of a revolution. Not immediately appreciated, of course.

Cotton was considered inferior: you bought a cheap cotton one at the market. It is 1969 and people had yet to learn

to appreciate natural fibres. Today we know better. After a hesitant start, the Dutch carpet industry descended en masse on the phenomenon of cotton carpets. Or rather, the phenomenon 3801.

By the end of the seventies, we counted 58 copies on the market. But Van Besouw had long since moved on to the next stage. The cotton velvet 3802 followed. Competitors never succeeded in copying this successful carpet.

# Excellence since 1839

1839, Goirle

Van Besouw was founded in Holland  
in 1839 with home weavers



1885, Goirle

Start of the first factory with  
production of linen and bags



1904, Goirle

Van Besouw started with Holtap  
(Holland Carpets)  
Carpets in 200cm width and rugs

1949, Goirle

Van Besouw get the wilton weaving  
machines. Originally Van Besouw  
wall-to wall carpets



1967, Goirle

Start of Van Besouw as a  
brandname.

Slogan: unbutton and just pretend  
carpet does not exist (it's not just a  
carpet ... it's a Van Besouw

1967, Goirle

The "turn around" in Van Besouw's  
history. Introduction of the cotton  
carpets made on raschel knitting  
machines

1966, Goirle

Benno Premsele (Industrial Designer)  
was invited. To design the next step  
of Van Besouw





#### 2010, Genemuiden

Van Besouw was taken over, into the  
the current organisation

#

Cotton is the tradition of Van Besouw  
and famous for this all over the world.

#

Van Besouw well known for its special  
colors and innovative products

#

Van Besouw is a passion, emotion,  
and you need to believe in it



#### 2013, Genemuiden

Re-introduction of the cotton  
collection. With a new colour range  
and an extra quality: 3809

#### 1970, Goirle

Winner of the famous  
award (at that time) for  
the woolmark collection



#### 2012, Genemuiden

Introduction of the Van Besouw  
PREM. Collections.

A polyamide contract collection,  
based Van Besouw's key values.



#### 2017, Genemuiden

Introduction of the soft  
and luxurious cotton  
collections.

Introduction of carpet tiles



key values

# DNA of Van Besouw



Besouw is unique in name, innovation, special colours, exclusive designs. Collections exist already for many years and you always will have the best attention from architects.

- products have a long life time.
- the satisfaction from a Van Besouw customer is very high.
- in Europe Van Besouw is very well established as brandname.
- the knitting technique gives a unique look and feel.
- Van Besouw is the only company worldwide with knitting looms.
- products from besouw appeals to a special feeling and growing need in the top of the market for sophistication.
- if you like it : you will be passionate.



dutch design



made in holland



pure materials





the tradition



eye for detail



the origin



high quality



craftmanship

*POSITIVE  
MINDS  
LIVE  
POSITIVE  
LIVES*

inspiration



Unique in the world: raschel knitted carpets

craftsmanship and design

## Excellence since 1839

Van Besouw has been around for a long time now: the company dates from 1839. In more than a century and a half, the company grew from weaving jute mailbags into being a leading supplier of contemporary carpets. How things can change!

Product innovation came - unexpected - during World War II. By then, Van Besouw had started producing rugs. The usual raw materials had become scarce. Then the social innovator's

grandson, also called Jan, built a mill for spinning paper. Used paper could be spun into yarn, which was woven into rugs. Today, using paper yarns is considered very innovative. Take note! The tone for Van Besouw's futures has been set. The key innovation comes in 1967, by which time Van Besouw has become a carpet factory. A move away from the trodden path: Van Besouw starts making carpets that are not made anywhere else.



industrial design

# Benno Premsele

Led by the industrial designer Benno Premsele, a new and innovative collection is produced, with cotton loop carpet 3801 as an icon. The 3801 is often copied later but never equalled. 'Creating rather than imitating' becomes the motto. Over forty years later, Van Besouw still is a renowned innovator. Craftsmanship is combined with modern technology. Clever inventions help create high-tech aesthetics. Van Besouw is ready for the future.

Creating above imitating

'Creating rather than imitating' becomes the motto. Over forty years later, Van Besouw still is a renowned innovator. Craftsmanship is combined with modern technology.



Raschel knitted cotton 3801

# cotton







cotton

# The raschel knitted handwriting

Led by the industrial designer Benno Premsele, a new and innovative collection is produced, with cotton loop carpet 3801 as an icon. The 3801 is often copied later but never equalled.

Features cotton

- very resistant
- good to colour
- skin friendly
- moisture absorbing
- matte colour
- nature product, nature feeling



## Raschel knitting

The piles are falling down in all directions. This is impossible in tufted carpets. Besides the high quality level of this production method, The "writing character" is one of the most beautiful things of this kind of carpets.



# project







project

# Vital Carpets for contract use

Healthy Carpets. This sound probably it bit strange, but it's reality. Carpets are good for healthy (working)space.

## Fine dust

Everywhere is fine dust. If you can reduce the amount of this dust, your environment is feeling more comfortable, more healthy.

A carpet is giving you a lot of benefits, compared to hard floors. By hard floors, the fine dust is swirling through the space. But carpets are keeping the dust into the piles. Until the space is vacuumed. Of course you have to vacuum the carpet, frequently.



## Woven last longer

Different carpets in the contract collection are flatwoven. One of the most durable types of production. The piles are fixated so strong to each other, which means your carpet last longer.

Also in highly used areas, the carpet remains of it is.



# specials





specials

# flavour of flooring textiles

Van Besouw loves textiles. Even more we love special carpets, creative colorpallettes and beautiful finishes.

Every space the right character

The special collection is a big chance, to give very space the right character.

Ideas enough. We think in materials, textures and colors. As soon as interesting materials are found, we look at the possible applications; in which production way can we make this. A moodboard follows. Thereafter a color proposal. And in the meantime, of course, the necessary (production)tests.



## Trending: volume rugs

The soft qualities in the Van Besouw program are extremely suitable for volume rugs (folded edges).

The pile is made of 100% Polyamide Silk Look yarn. Due to a high and full pool deck, this qualities has a voluminous and luxurious appearance.



wool







wool

# Luxurious high-end carpet

Wondering wool. That's the combination of Van Besouw and the wool fibre.

Woven and raschel knitted. Thick luxurious or strong flat contract carpet. You can find it all in Van Besouw's wool collection.

Wondering wool by wealth and diversity

romantic	vs.	architectonic
traditional	vs.	innovative
artisan	vs.	industrial
soft	vs.	hard
warm	vs.	cool
robust	vs.	refined
luxury	vs.	simplicity
elegant	vs.	sturdy



1 8 0 3

wool      raschel  
knitted

2 4 0 1

poly-      woven  
mide

## Named figures

Van Besouw gives never names to the carpets. A but quirky, but with a reason: Names are associative.

But the numbers are not choosen randomly. For example, the first figure is for the material, the second for the way of production. The last two figures are the serial number.



van besouw

# Productoverview

22 - 35 Wool

36 - 47 Project

48 - 71 Soft

72 - 85 Cotton



1406

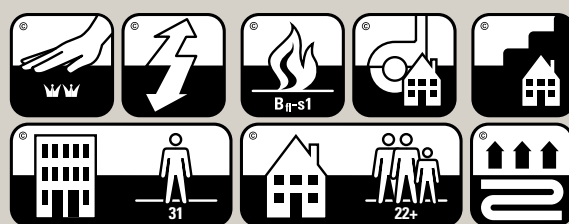




## BENEFITS

- the special looping method of the luxury yarn creates the characteristic knotted nap.
- new Zealand wool
  - > highest quality wool
  - > soft, luxurious fibre
  - > rich, deep colours
- wide range of applications (see characteristics)
- highly suitable as a custom area rug
  - > rugs are supplied with a standard comfortable extra anti-slip backing
- easily workable; longitudinal seams can be laid invisibly. Download the installation recommendations for more information
- available in custom colours from 480 m2

## SYMBOLS



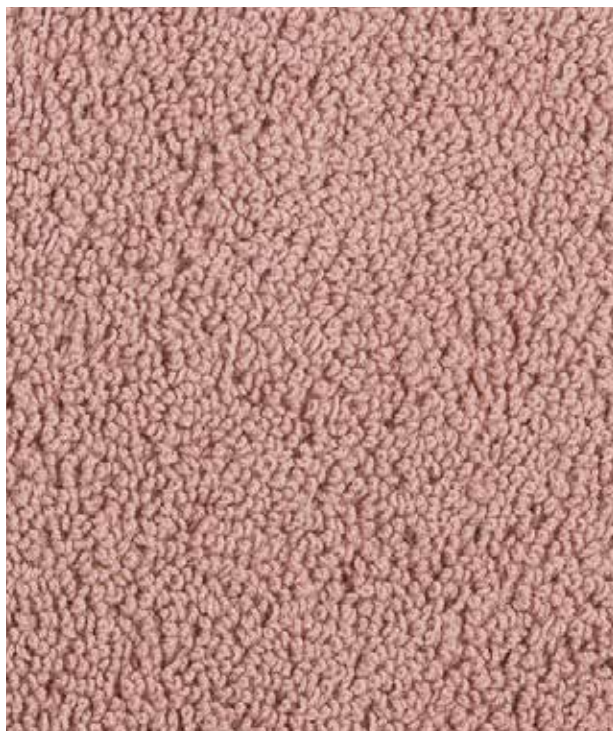
## FACTS

- Type of manufacture: woven
- Pile material: 100% new zealand wool
- Back: bio jute
- Total thickness: 9,7 mm
- Pile weight: 1825 g/m2
- Width: 400 cm

1803



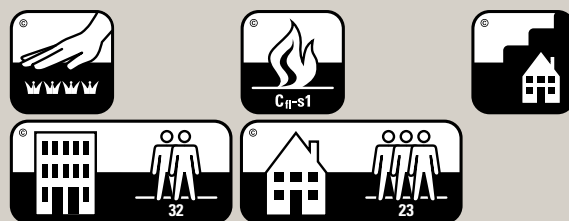




## BENEFITS

- The cotton loop has long been a well-known Van Besouw phenomenon. The 1803 is the woollen derivative of that. The high pile weight with the characteristic Van Besouw loop creates a super-de-luxe carpet.
- 100% wool
  - > highest quality wool
  - > soft, luxurious fibre
  - > rich, deep colours
  - wide range of applications (see characteristics)
- highly suitable as a custom area rug
  - > rugs are supplied with a standard comfortable extra anti-slip backing
- Easily workable; longitudinal and crosswise seams can be laid invisibly. Download the installation recommendations for more information
- available in custom colours from 200 m<sup>2</sup>

## SYMBOLS



## FACTS

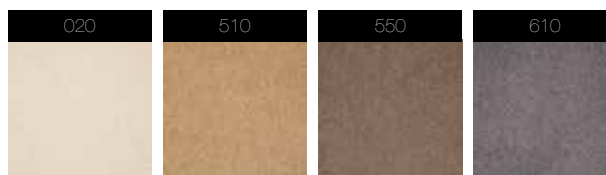
- Type of manufacture: raschel knitted
- Pile material: 100% wool
- Back: jute
- Total thickness: 11,2 mm
- Pile weight: 1400 g/m<sup>2</sup>
- Width: 400 cm



1805



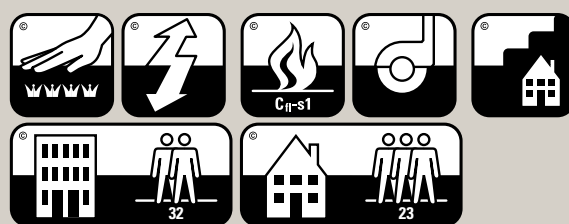




## BENEFITS

- The best of all worlds. It is, in fact, no twist or velour, but a combination of all. Because the carpet is knitted the piles are falling in all directions
- > tip: to see this effect well please ask for a bigger sample
- 100% wool
  - > highest quality wool
  - > soft, luxurious fibre
  - > rich, deep colours
  - wide range of applications (see characteristics)
- highly suitable as a custom area rug
  - > click on carpet finish for the options
  - > rugs are supplied with a standard comfortable extra anti-slip backing
- easily workable; longitudinal seams can be installed invisibly. Download the installation recommendations for more information
- available in custom colours from 480 m2

## SYMBOLS

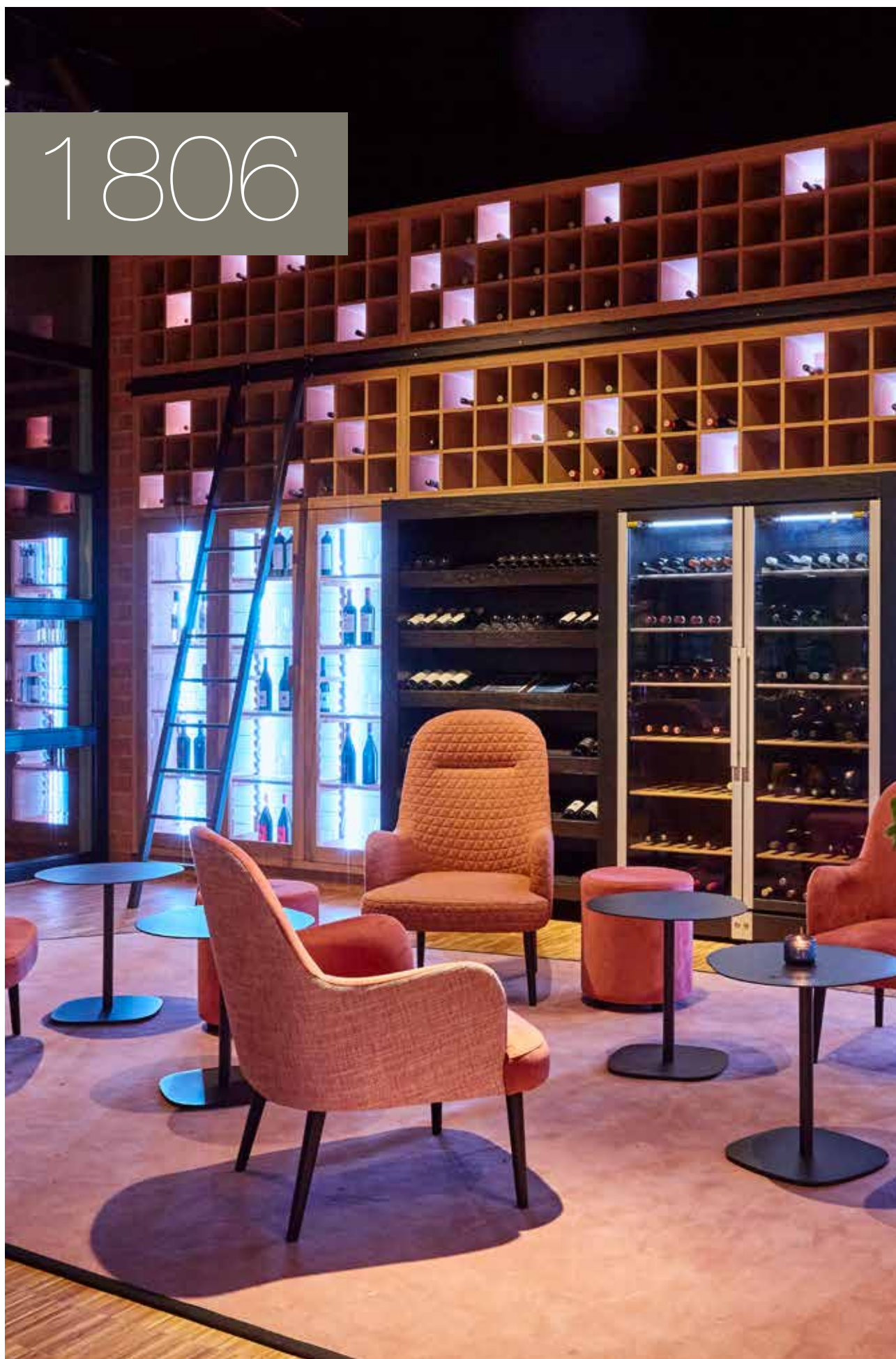


## FACTS

- Type of manufacture: raschel knitted
- Pile material: 100% wool
- Back: non woven
- Total thickness: 10 mm
- Pile weight: 1525 g/m2
- Width: 400 cm



1806

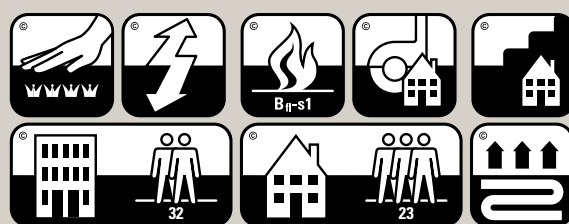




## BENEFITS

- The most beautiful wool yarn in a knitted carpet makes the most beautiful velour carpet. Just look at the fine pinpoint
- 100% wool
  - > highest quality wool
  - > soft, luxurious fibre
  - > rich, deep colours
 wide range of applications (see characteristics)
- highly suitable as a custom area rug
  - > rugs are supplied with a standard comfortable extra anti-slip backing
- easily workable; longitudinal seams can be laid invisibly. Download the installation recommendations for more information
- available in custom colours from 200 m<sup>2</sup>

## SYMBOLS



## FACTS

- Type of manufacture: raschel knitted
- Pile material: 100% wool
- Back: synthetic
- Total thickness: 9,3 mm
- Pile weight: 1350 g/m<sup>2</sup>
- Width: 400 cm



1808

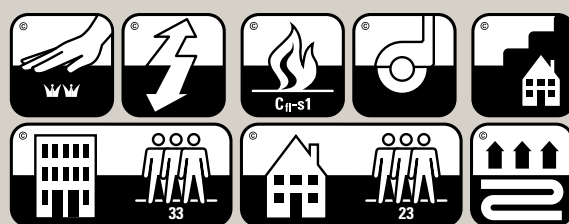




## BENEFITS

- the combination of the material, structure and manufacture creates a completely unique product
- 100% wool
  - > highest quality wool
  - > soft, luxurious fibre
  - > rich, deep colours
  - wide range of applications (see characteristics)
- highly suitable as a custom area rug
  - > rugs are supplied with a standard comfortable extra anti-slip backing
- easily workable; longitudinal seams can be installed invisibly. Download the installation recommendations for more information
- available in custom colours from 200 m<sup>2</sup>

## SYMBOLS



## FACTS

- Type of manufacture: raschel knitted
- Pile material: 100% wool
- Back: non woven
- Total thickness: 10 mm
- Pile weight: 1175 g/m<sup>2</sup>
- Width: 400 cm



4403

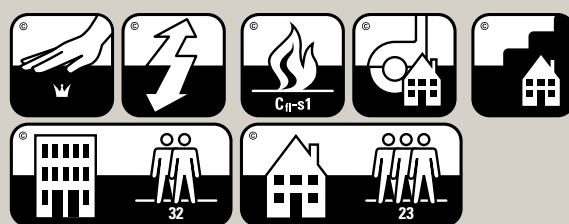




## BENEFITS

- an exceptionally strong combination: wool with goats' hair. And above all, the goats' hair gives that extra dimension to the look and feel of this carpet
- the production method says it all: flat weave. A tightly woven carpet making it suitable for a wide range of applications
- combination of yarns
  - > wool is natural
  - > matt appearance
  - > goats' hair is strong and reinforces the natural look
  - > long lifespan
 wide range of applications (see characteristics)
- highly suitable as a custom area rug
  - > rugs are supplied with a standard comfortable extra anti-slip backing
- available in custom colours from 1060 m<sup>2</sup>

## SYMBOLS



## FACTS

- Type of manufacture: woven
- Pile material: 50% wool / 50% goat's hair
- Back: bio jute
- Total thickness: 7,1 mm
- Pile weight: 1425 g/m<sup>2</sup>
- Width: 400 cm



4404

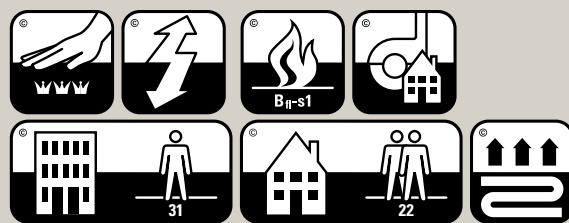




## BENEFITS

- The fibre used is 100% natural: 0.0% dye is used to create the colour; it comes straight from the sheep and goat
- Characteristic diagonal structure: on the roll it runs from bottom left to top right
- Perfect combination of yarns: soft and luxurious
- mix of yarns
  - > luxurious fibre
  - > matt appearance
  - > long lifespan
- highly suitable as a custom area rug
  - > rugs are supplied with a standard comfortable extra anti-slip backing

## SYMBOLS



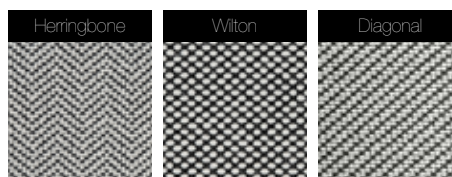
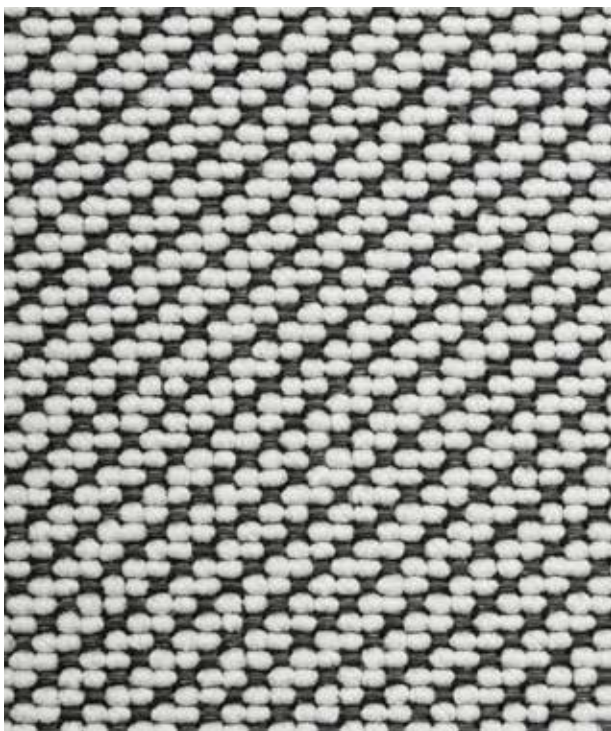
## FACTS

- Type of manufacture: woven
- Pile material: 80% wool / 20% cashmerehair
- Back: jute
- Total thickness: 9,3 mm
- Pile weight: 1350 g/m2
- Width: 400 cm



2401

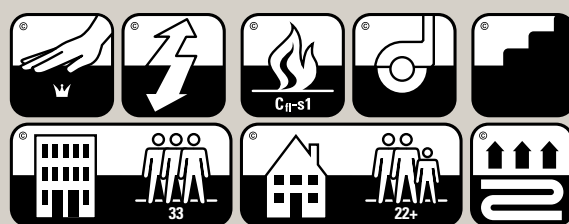




## BENEFITS

- perfectly suitable for intensively used areas due to the combination of the polyamide fibre and tight even weave
- polyamide
  - > very strong fibre
  - > easy to clean and maintain
  - > long lifespan
  - > very durable
- wide range of applications (see characteristics)
- highly suitable as a custom area rug
  - > rugs are supplied with a standard comfortable extra anti-slip backing

## SYMBOLS

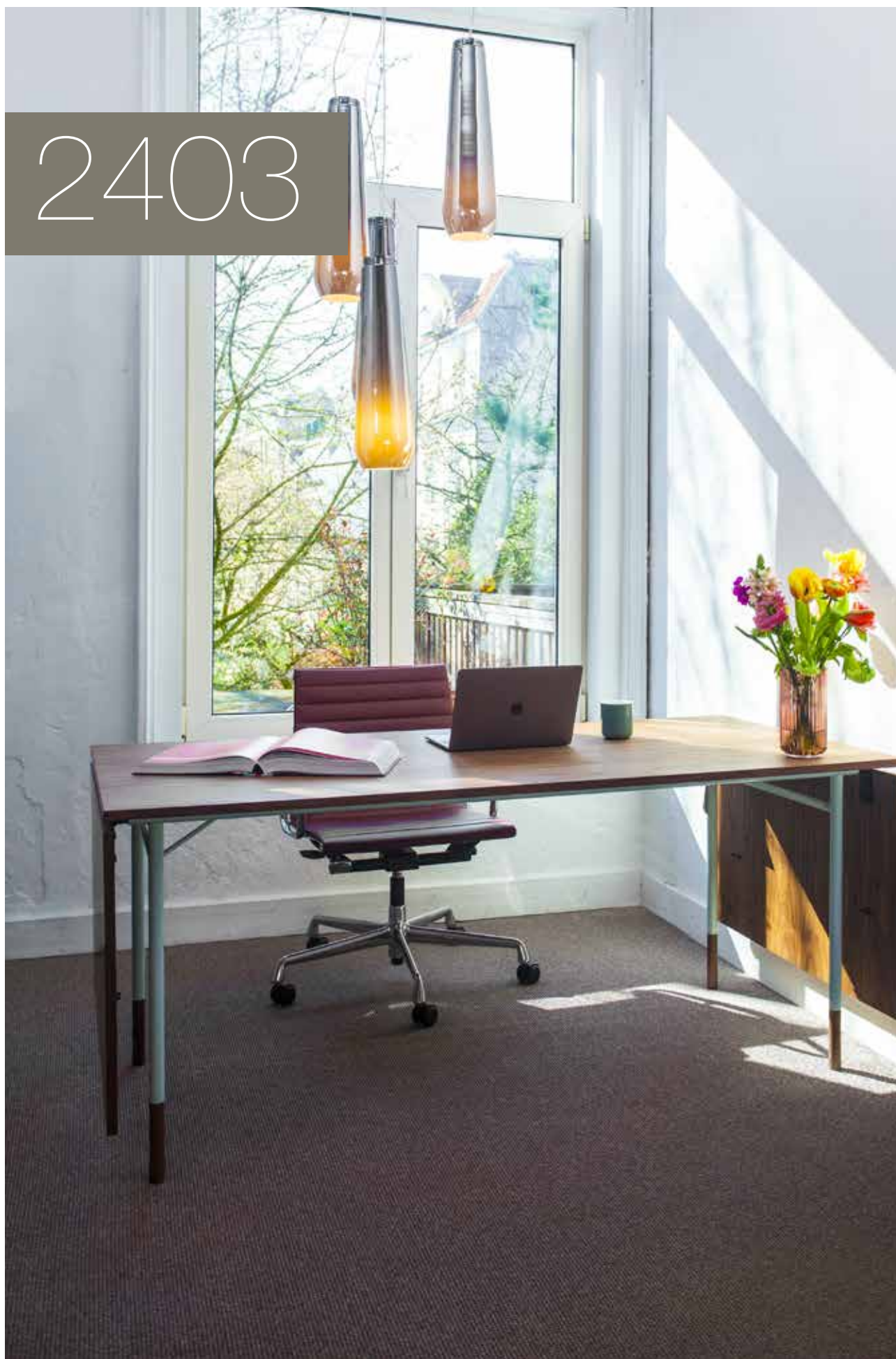


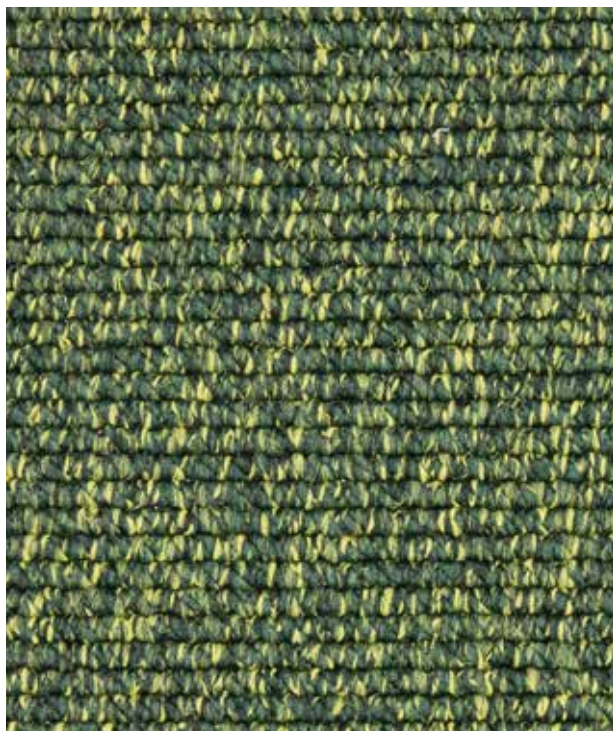
## FACTS

- Type of manufacture: woven
- Pile material: 100% SDN PA 6.6
- Back: synthetic
- Total thickness: 6 mm
- Pile weight: 900 g/m<sup>2</sup>
- Width: 400 cm



2403

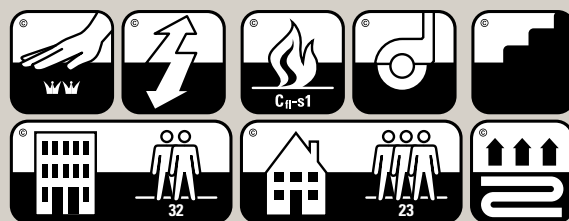




## BENEFITS

- perfectly suitable for intensively used areas due to the combination of the polyamide fibre and tight even weave
- very modern look and feel because of the minimalistic combination of three twisted colours
- polyamide
  - > very strong fibre
  - > easy to clean and maintain
  - > long lifespan
  - > very durable
- wide range of applications (see characteristics)
- highly suitable as a custom area rug
  - > rugs are supplied with a standard comfortable extra anti-slip backing

## SYMBOLS



## FACTS

- Type of manufacture: woven
- Pile material: 100% polyamide 6 Econyl
- Back: synthetic
- Total thickness: 8,1 mm
- Pile weight: 1500 g/m<sup>2</sup>
- Width: 400 cm



2404



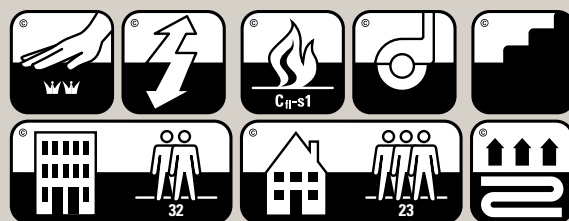




## BENEFITS

- perfectly suitable for intensively used areas due to the combination of the polyamide fibre and tight even weave
- very modern look and feel because of the minimalistic combination of three twisted colours
- polyamide
  - > very strong fibre
  - > easy to clean and maintain
  - > long lifespan
  - > very durable
- wide range of applications (see characteristics)
- highly suitable as a custom area rug
  - > rugs are supplied with a standard comfortable extra anti-slip backing

## SYMBOLS



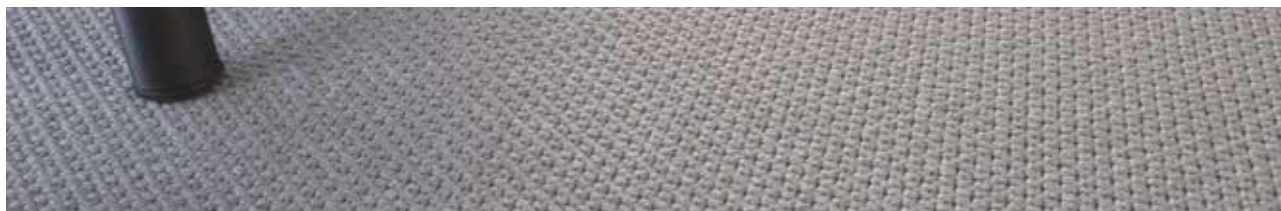
## FACTS

- Type of manufacture: woven
- Pile material: 100% polyamide 6 Econyl
- Back: synthetic
- Total thickness: 8,1 mm
- Pile weight: 1500 g/m<sup>2</sup>
- Width: 400 cm



2405

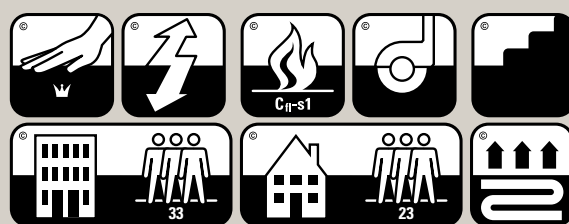




## BENEFITS

- perfectly suitable for intensively used areas due to the combination of the polyamide fibre and tight even weave
- polyamide 6.6 ultron
  - > very strong fibre
  - > easy to clean and maintain
  - > long lifespan
  - > very durable
- wide range of applications (see characteristics)
- highly suitable as a custom area rug
  - > rugs are supplied with a standard comfortable extra anti-slip backing
- easily workable; longitudinal seams can be installed invisibly. Download the installation recommendations for more information
- available in custom colours from 200 m2

## SYMBOLS



## FACTS

- Type of manufacture: woven
- Pile material: 100% polyamide 6.6 Ultron
- Back: synthetic
- Total thickness: 6 mm
- Pile weight: 600 g/m2
- Width: 400 cm



2601

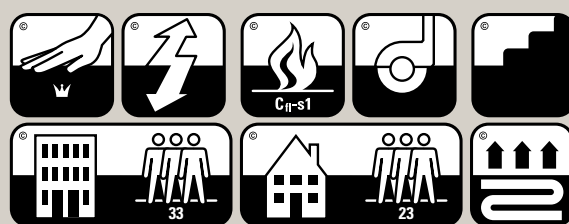




## BENEFITS

- perfectly suitable for intensive use due to the combination of the polyamide fibres and strong pile adhesion  
the distinctive 'space' is not dyed. The lighter the colour, the more it catches the eye. This effect is barely visible with very deep colours
- polyamide
  - > very strong fibre
  - > easy to clean and maintain
  - > long lifespan
  - > very durable
- wide range of applications (see characteristics)
- highly suitable as a custom area rug
  - > rugs are supplied with a standard comfortable extra anti-slip backing
- easily workable; longitudinal seams can be installed invisibly. Download the installation recommendations for more information
- available in custom colours from 200 m2

## SYMBOLS



## FACTS

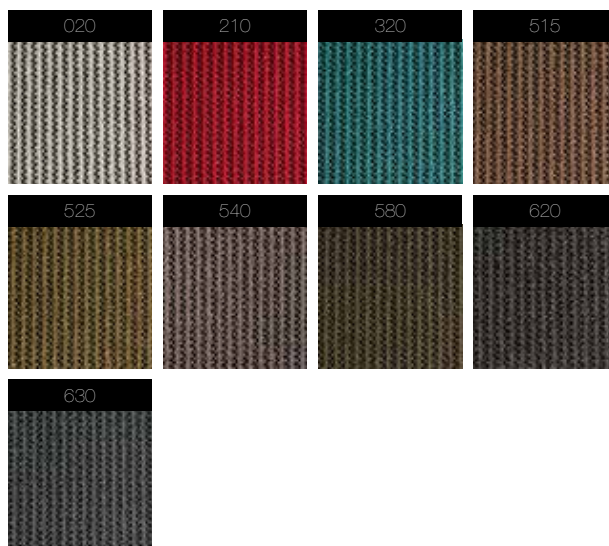
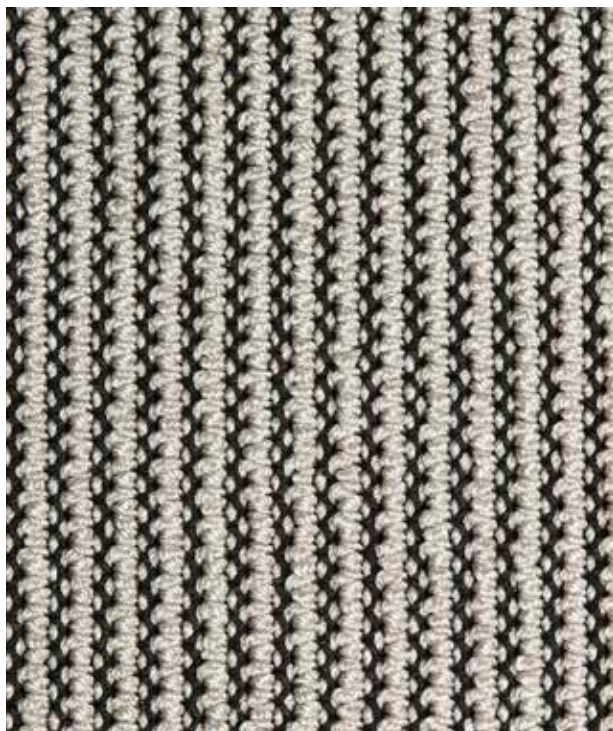
- Type of manufacture: woven
- Pile material: 100% polyamide 6.6 Ultron
- Back: synthetic
- Total thickness: 6 mm
- Pile weight: 600 g/m2
- Width: 400 cm



2808



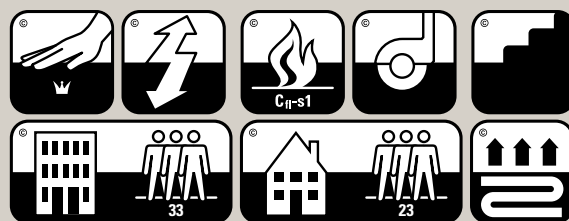




## BENEFITS

- perfectly suitable for intensive use due to the combination of the polyamide fibres and strong pile adhesion
- polyamide
  - > very strong fibre
  - > easy to clean and maintain
  - > long lifespan
  - > very durable
- wide range of applications (see characteristics)
- highly suitable as a custom area rug
  - > rugs are supplied with a standard comfortable extra anti-slip backing
- available in custom colours from 400 m<sup>2</sup>

## SYMBOLS



## FACTS

- Type of manufacture: raschel knitted
- Pile material: 100% polyamide 6
- Back: non woven
- Total thickness: 7 mm
- Pile weight: 675 g/m<sup>2</sup>
- Width: 400 cm



2301

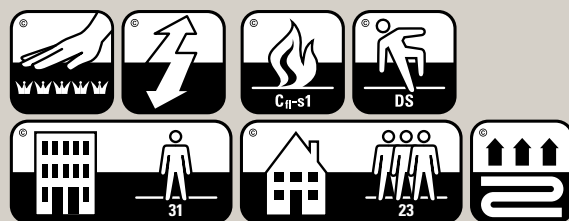




## BENEFITS

- ultimate comfort. That is 2301. The polyamide micro fibre yarn makes it soft to touch. The shiny yarn gives the carpet an exceptional visual effect
- handwoven: high pile density and strong quality
- Synthetic MicroFiber
  - > very strong fibre
  - > easy to clean and maintain
  - > long lifespan
  - > very durable
- wide range of applications (see characteristics)
- highly suitable as a custom area rug
  - > rugs are supplied with a standard comfortable extra anti-slip backing
  - > also available as volume rugs (folded edges)

## SYMBOLS

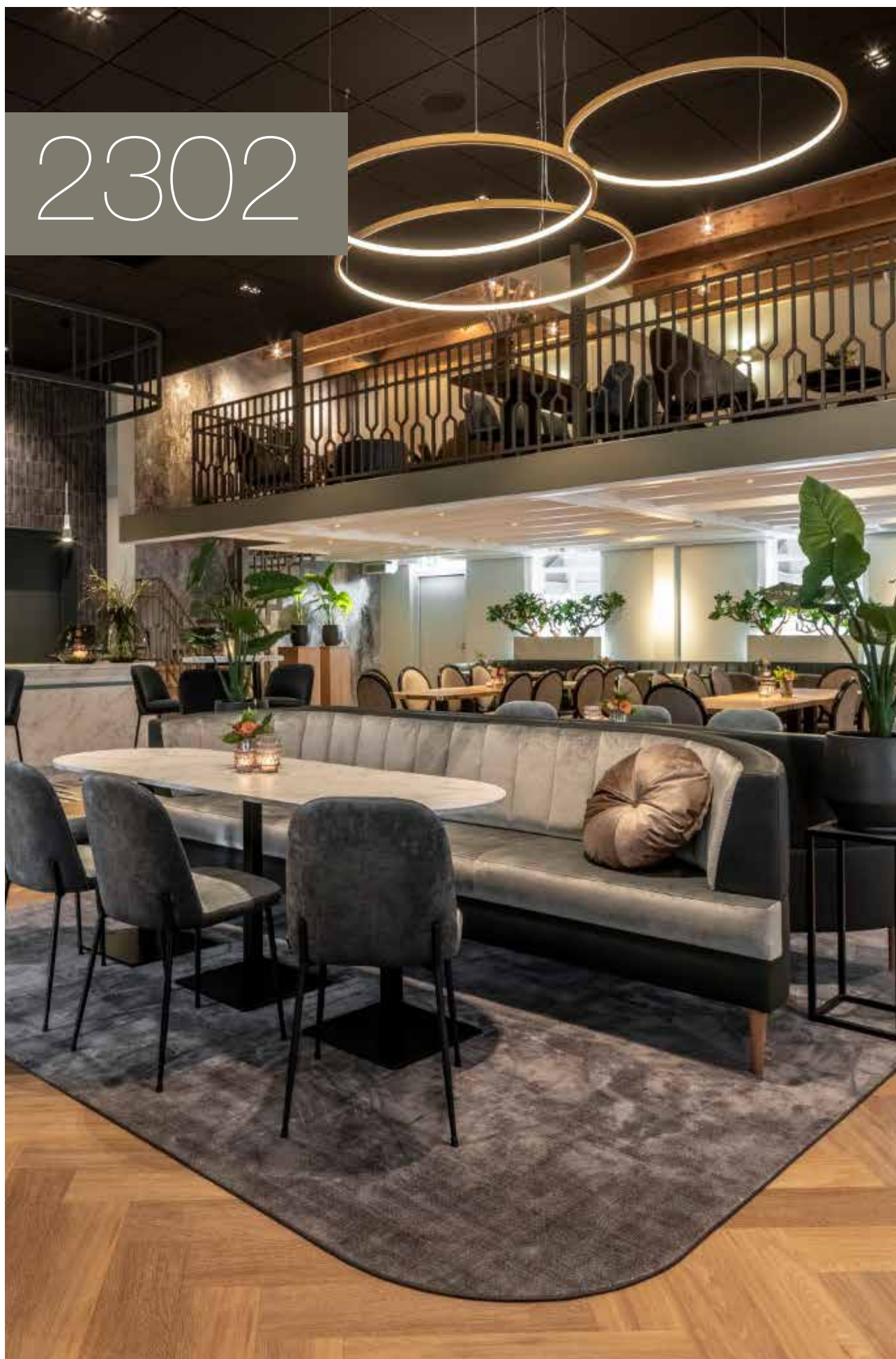


## FACTS

- Type of manufacture: handwoven
- Pile material: 100% Synthetic MicroFiber
- Back: textile
- Total thickness: 13 mm
- Total weight: 4305 g/m<sup>2</sup>
- Pile weight: 2950 g/m<sup>2</sup>
- Width: 500 cm



2302

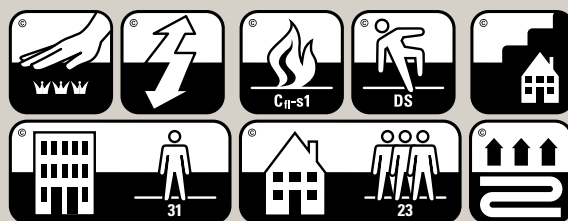




## BENEFITS

- comfort and vintage design: 2302. The polyamide micro fibre yarn makes it soft to touch. The combination of shiny yarn and typical structure is giving special effects
- handwoven: high pile density and strong quality
- 100% Polyamide
  - > very strong fibre
  - > easy to clean and maintain
  - > long lifespan
  - > very durable
- wide range of applications (see characteristics)
- highly suitable as a custom area rug
  - > rugs are supplied with a standard comfortable extra anti-slip backing
  - > also available as volume rugs (folded edges)
- Suited for stairs, only if the steps are rounded of 2 cm/0,8".

## SYMBOLS



## FACTS

- Type of manufacture: handwoven
- Pile material: 100% Polyamide
- Back: textile
- Total thickness: 8 mm
- Total weight: 3125 g/m<sup>2</sup>
- Pile weight: 1750 g/m<sup>2</sup>
- Width: 500 cm



2605

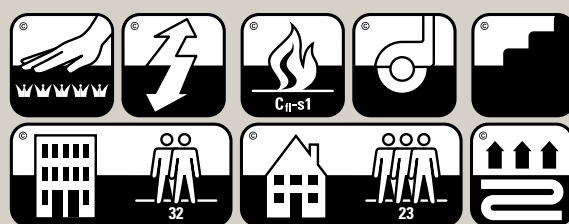




## BENEFITS

- ultimate comfort. That is 2605. The polyamide ultra-soft yarn makes it soft to the touch. The shiny yarn gives the carpet an exceptional visual effect
- perfectly suitable for intensive use due to the combination of the polyamide fibres and strong pile adhesion
- polyamide
  - > very strong fibre
  - > easy to clean and maintain
  - > long lifespan
  - > very durable
- wide range of applications (see characteristics)
- highly suitable as a custom area rug
  - > rugs are supplied with a standard comfortable extra anti-slip backing
  - > also available as volume rugs (folded edges)
- available in custom colours from 300 m2

## SYMBOLS



## FACTS

- Type of manufacture: tufted
- Pile material: 100% polyamide ultra soft
- Back: synthetic
- Total thickness: 10,7 mm
- Pile weight: 1780 g/m2
- Width: 400 cm



2606

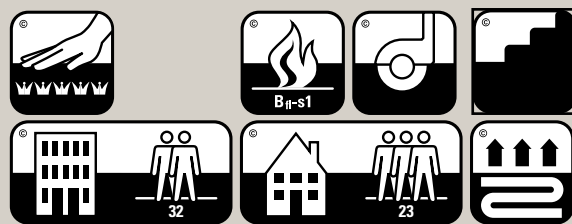




## BENEFITS

- ultimate comfort. That is 2606. The polyamide ultra-soft yarn makes it soft to the touch. The shiny yarn gives the carpet an exceptional visual effect
- perfectly suitable for intensive use due to the combination of the polyamide fibres and strong pile adhesion
- polyamide
  - > very strong fibre
  - > easy to clean and maintain
  - > long lifespan
  - > very durable
- wide range of applications (see characteristics)
- highly suitable as a custom area rug
  - > rugs are supplied with a standard comfortable extra anti-slip backing
  - > also available as volume rugs (folded edges)
- available in custom colours from 300 m2

## SYMBOLS



## FACTS

- Type of manufacture: tufted
- Pile material: 100% polyamide ultra soft
- Back: soft synthetic
- Total thickness: 14,2 mm
- Pile weight: 2480 g/m2
- Width: 400 cm



2607

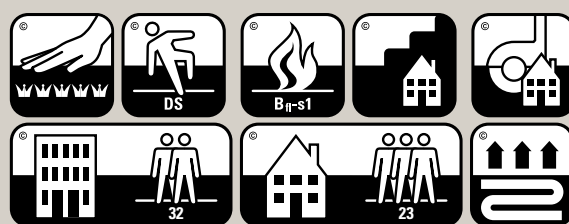




## BENEFITS

- ultimate comfort. That is 2607. The polyamide ultra-soft yarn makes it soft to the touch. The shiny yarn gives the carpet an exceptional visual effect
- perfectly suitable for intensive use due to the combination of the polyamide fibres and strong pile adhesion
- polyamide
  - > very strong fibre
  - > easy to clean and maintain
  - > long lifespan
  - > very durable
- wide range of applications (see characteristics)
- highly suitable as a custom area rug
  - > rugs are supplied with a standard comfortable extra anti-slip backing
  - > also available as volume rugs (folded edges)
- available in custom colours from 400 m2

## SYMBOLS



## FACTS

- Type of manufacture: tufted
- Pile material: 100% polyamide ultra soft
- Back: soft synthetic
- Total thickness: 10,4 mm
- Pile weight: 2300 g/m2
- Width: 400 cm



2608

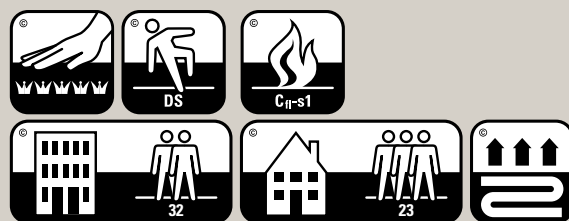




## BENEFITS

- the 2608 is carpet with an impressive high pile weight! This provides an ultra-soft and voluminous result. A feast for the feet.
- perfectly suitable for intensive use due to the combination of the polyamide fibres and strong pile adhesion
- polyamide
  - > very strong fibre
  - > easy to clean and maintain
  - > long lifespan
  - > very durable
- wide range of applications (see characteristics)
- highly suitable as a custom area rug
  - > rugs are supplied with a standard comfortable extra anti-slip backing
  - > also available as volume rugs (folded edges)
- available in custom colours from 400 m2

## SYMBOLS



## FACTS

- Type of manufacture: tufted
- Pile material: 100% polyamide ultra soft
- Back: synthetic
- Total thickness: 16,9 mm
- Pile weight: 2850 g/m2
- Width: 400 cm



2609

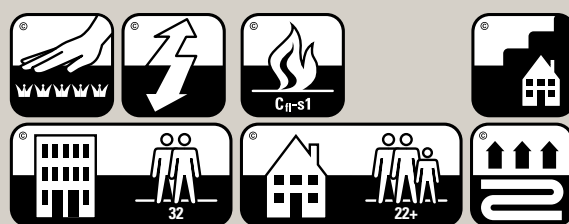




## BENEFITS

- ultimate comfort. That is 2609. The polyamide ultra-soft yarn makes it soft to the touch. The shiny yarn gives the carpet an exceptional visual effect
- perfectly suitable for intensive use due to the combination of the polyamide fibres and strong pile adhesion
- polyamide
  - > very strong fibre
  - > easy to clean and maintain
  - > long lifespan
  - > very durable
- wide range of applications (see characteristics)
- highly suitable as a custom area rug
  - > rugs are supplied with a standard comfortable extra anti-slip backing
  - > also available as volume rugs (folded edges)
- available in custom colours from 400 m2

## SYMBOLS



## FACTS

- Type of manufacture: tufted
- Pile material: 100% polyamide ultra soft
- Back: synthetisch
- Total thickness: 10.1 mm
- Pile weight: 1666 g/m2
- Width: 400 & 500 cm.



2610

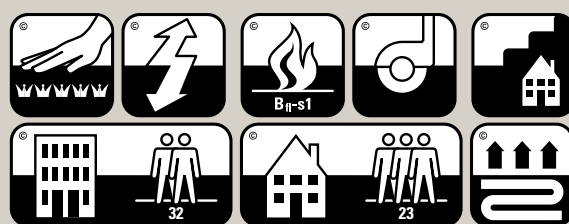




## BENEFITS

- the 2610 is the best example of ultimate design, practical composition and wonderful comfort. Soft, shiny and comfortable. With the benefits of polyamide: durable and easy to maintain.
- perfectly suitable for intensive use due to the combination of the polyamide fibres and strong pile adhesion
- polyamide
  - > very strong fibre
  - > easy to clean and maintain
  - > long lifespan
  - > very durable
- wide range of applications (see characteristics)
- highly suitable as a custom area rug
  - > rugs are supplied with a standard comfortable extra anti-slip backing
  - > also available as volume rugs (folded edges)
- available in custom colours from 400 m2

## SYMBOLS



## FACTS

- Type of manufacture: tufted
- Pile material: 100% polyamide ultra soft 6.6 Slik Look
- Back: soft synthetisch
- Total thickness: 12 mm
- Pile weight: 2265 g/m2
- Width: 400 cm



261 1

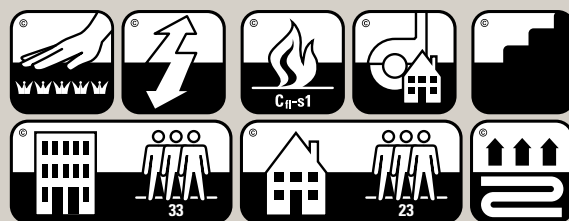




## BENEFITS

- ultimate comfort. That is 2611. The polyamide ultra-soft yarn makes it soft to the touch. The shiny yarn gives the carpet an exceptional visual effect
- perfectly suitable for intensive use due to the combination of the polyamide fibres and strong pile adhesion
- polyamide
  - > very strong fibre
  - > easy to clean and maintain
  - > long lifespan
  - > very durable
- wide range of applications (see characteristics)
- highly suitable as a custom area rug
  - > rugs are supplied with a standard comfortable extra anti-slip backing
  - > also available as volume rugs (folded edges)
- available in custom colours from 300 m2

## SYMBOLS



## FACTS

- Type of manufacture: tufted
- Pile material: 100% polyamide ultra soft
- Back: soft synthetic
- Total weight: 2750 g/m2
- Total thickness: 11,4 mm
- Pile weight: 1950 g/m2
- Width: 400 cm



2612

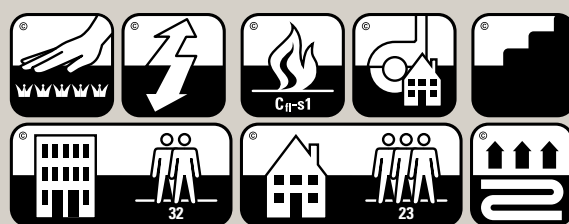




## BENEFITS

- ultimate comfort. That is 2612. The polyamide ultra-soft yarn makes it soft to the touch. The shiny yarn gives the carpet an exceptional visual effect
- perfectly suitable for intensive use due to the combination of the polyamide fibres and strong pile adhesion
- polyamide
  - > very strong fibre
  - > easy to clean and maintain
  - > long lifespan
  - > very durable
- wide range of applications (see characteristics)
- highly suitable as a custom area rug
  - > rugs are supplied with a standard comfortable extra anti-slip backing
  - > also available as volume rugs (folded edges)
- available in custom colours from 300 m2

## SYMBOLS



## FACTS

- Type of manufacture: tufted
- Pile material: 100% polyamide ultra soft
- Back: soft synthetic
- Total weight: 3385 g/m2
- Total thickness: 12,5 mm
- Pile weight: 2040 g/m2
- Width: 400 cm



2613

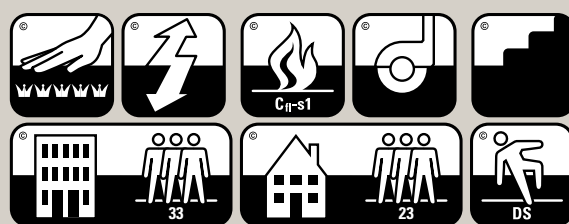




## BENEFITS

- ultimate comfort. That is 2613. The polyamide ultra-soft yarn makes it soft to the touch. The shiny yarn gives the carpet an exceptional visual effect
- perfectly suitable for intensive use due to the combination of the polyamide fibres and strong pile adhesion
- polyamide
  - > very strong fibre
  - > easy to clean and maintain
  - > long lifespan
  - > very durable
- wide range of applications (see characteristics)
- highly suitable as a custom area rug
  - > rugs are supplied with a standard comfortable extra anti-slip backing
  - > also available as volume rugs (folded edges)
- available in custom colours from 300 m2

## SYMBOLS



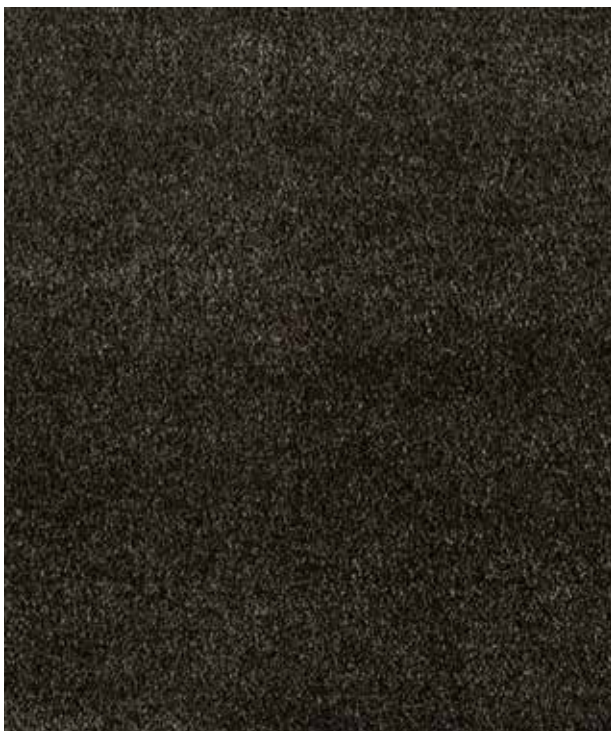
## FACTS

- Type of manufacture: tufted
- Pile material: 100% polyamide ultra soft
- Back: soft synthetic
- Total thickness: 11,2 mm
- Total weight: 3000 g/m2
- Pile weight: 2150 g/m2
- Width: 400 cm



2615

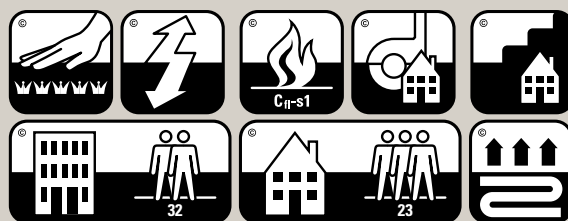




## BENEFITS

- ultimate comfort. That is 2615. The polyamide ultra-soft yarn makes it soft to the touch. The shiny yarn gives the carpet an exceptional visual effect
- perfectly suitable for intensive use due to the combination of the polyamide fibres and strong pile adhesion
- polyamide
  - > very strong fibre
  - > easy to clean and maintain
  - > long lifespan
  - > very durable
- wide range of applications (see characteristics)
- highly suitable as a custom area rug
  - > rugs are supplied with a standard comfortable extra anti-slip backing
  - > also available as volume rugs (folded edges)
- available in custom colours from 300 m2

## SYMBOLS



## FACTS

- Type of manufacture: tufted
- Pile material: 100% polyamide ultra soft
- Back: soft synthetic
- Total thickness: 11 mm
- Total weight: 2550 g/m2
- Pile weight: 1550 g/m2
- Width: 400 cm



3801

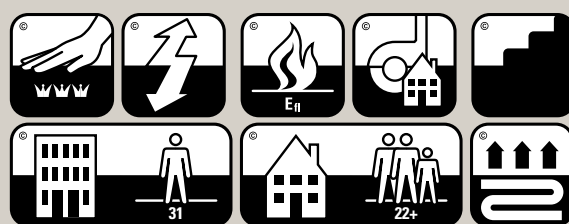




## BENEFITS

- cotton is a very strong fibre and therefore perfectly suitable for intensively used spaces
- knitting with cotton, that is what made Van Besouw famous. The 3801 is a timeless design classic that never gets boring
- note its fluid character through the combination of the fibre and knitting technique. The longer the carpet is used the more beautiful it becomes
- cotton
  - > very strong fibre
  - > matt appearance
  - > long lifespan
- highly suitable as a custom area rug
  - > rugs are supplied with a standard comfortable extra anti-slip backing
- available in custom colours from 400 m2

## SYMBOLS



## FACTS

- Type of manufacture: raschel knitted
- Pile material: 100% cotton
- Back: Jute
- Total thickness: 7,6 mm
- Pile weight: 1400 g/m2
- Width: 400 cm



3802

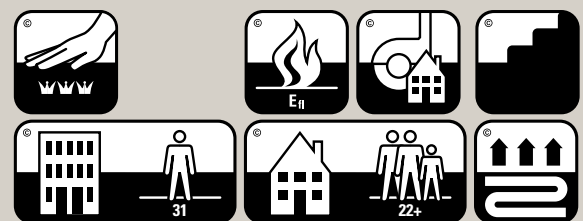




## BENEFITS

- cotton is a very strong fibre and therefore perfectly suitable for intensively used spaces
- The tricolour pile works as a solid colour, whereby the carpet perfectly complements the other colours in an interior
- knitting with cotton, that is what made Van Besouw famous. The 3802 is a timeless design classic that never gets boring
- note its fluid character through the combination of the fibre and knitting technique. The longer the carpet is used the more beautiful it becomes
- cotton
  - > very strong fibre
  - > matt appearance
  - > long lifespan
- highly suitable as a custom area rug
  - > rugs are supplied with a standard comfortable extra anti-slip backing

## SYMBOLS



## FACTS

- Type of manufacture: raschel knitted
- Pile material: 100% cotton
- Back: non woven
- Total thickness: 7,5 mm
- Pile weight: 1800 g/m<sup>2</sup>
- Width: 400 cm



3805



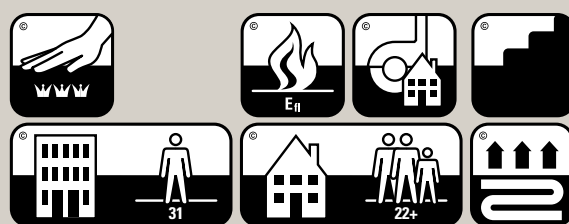




## BENEFITS

- cotton is a very strong fibre and therefore perfectly suitable for intensively used spaces
- knitting with cotton, that is what made Van Besouw famous. The 3805 is a timeless design classic that never gets boring
- note its fluid character through the combination of the fibre and knitting technique. The longer the carpet is used the more beautiful it becomes
- cotton
  - > very strong fibre
  - > matt appearance
  - > long lifespan
- highly suitable as a custom area rug
  - > rugs are supplied with a standard comfortable extra anti-slip backing
- available in custom colours from 400 m2

## SYMBOLS



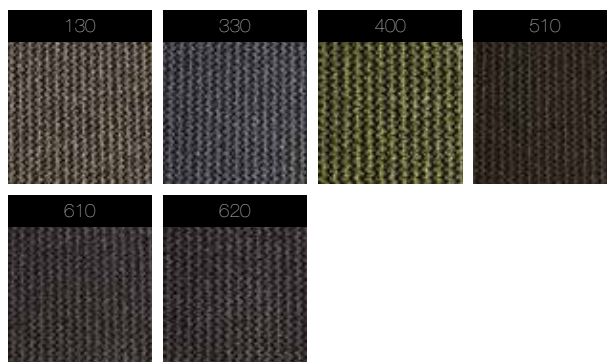
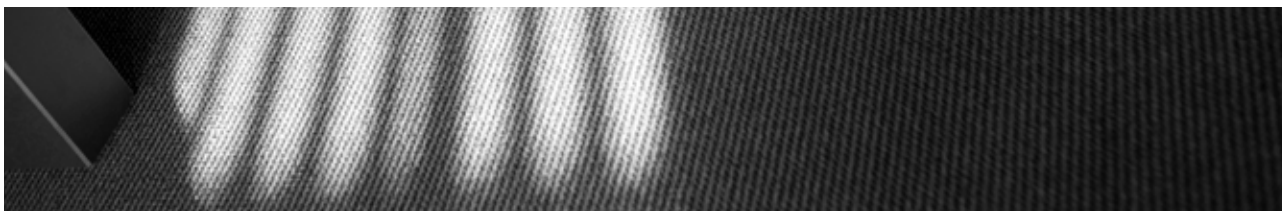
## FACTS

- Type of manufacture: raschel knitted
- Pile material: 100% cotton
- Back: Jute
- Total thickness: 8,9 mm
- Pile weight: 1200 g/m2
- Width: 400 cm



3808

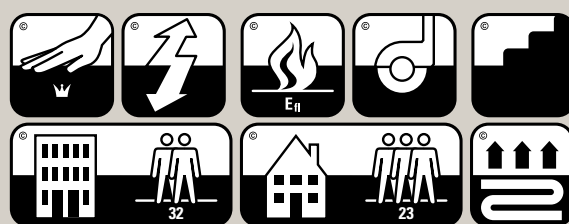




## BENEFITS

- inspired by the Dutch fields, as seen from the air. The result, a characteristic, knitted cable structure
- cotton is a very strong fibre and therefore perfectly suitable for intensively used spaces
- knitting with cotton, that is what made Van Besouw famous. The 3808 is a timeless design classic that never gets boring
- cotton
  - > very strong fibre
  - > matt appearance
  - > long lifespan
- wide range of applications (see characteristics)
- highly suitable as a custom area rug
  - > rugs are supplied with a standard comfortable extra anti-slip backing
- available in custom colours from 400 m<sup>2</sup>

## SYMBOLS



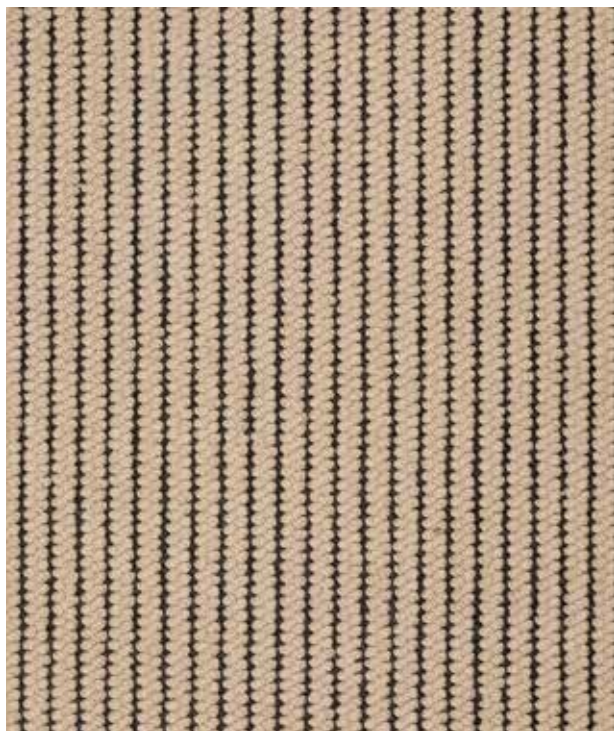
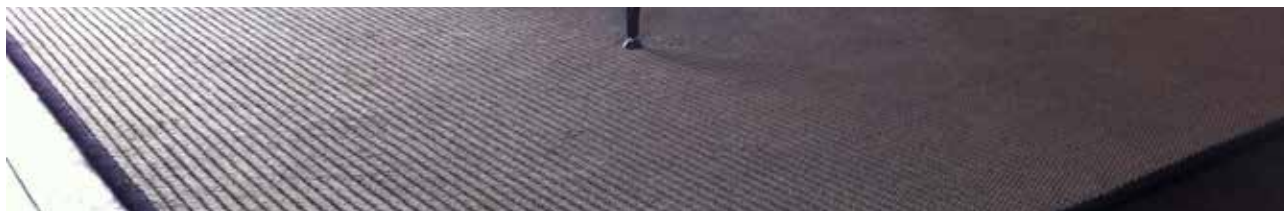
## FACTS

- Type of manufacture: raschel knitted
- Pile material: 100% cotton
- Back: non woven
- Total thickness: 4,8 mm
- Pile weight: 325 g/m<sup>2</sup>
- Width: 400 cm



3809

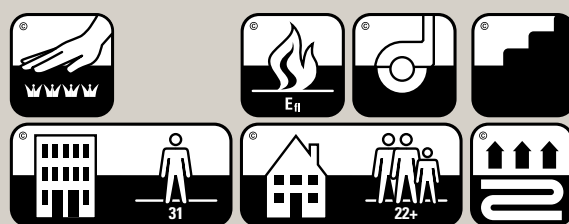




## BENEFITS

- inspired by the Dutch fields, as seen from the air. The result, a characteristic, knitted cable structure
- knitting with cotton, that is what made Van Besouw famous. The 3809 is a timeless design classic that never gets boring
- note its fluid character through the combination of the fibre and knitting technique. The longer the carpet is used the more beautiful it becomes
- cotton  
> very strong fibre > matt appearance > long lifespan
- highly suitable as a custom area rug  
> rugs are supplied with a standard comfortable extra anti-slip backing
- available in custom colours from 400 m2

## SYMBOLS



## FACTS

- Type of manufacture: raschel knitted
- Pile material: 100% cotton
- Back: non woven
- Total thickness: 7,9 mm
- Pile weight: 1125 g/m2
- Width: 400 cm



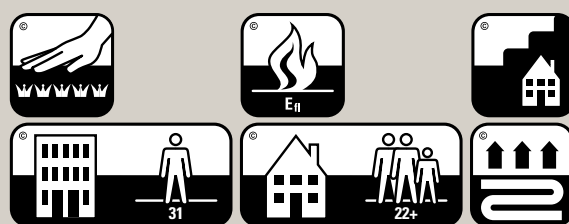




## BENEFITS

- cotton is a very strong fibre and therefore perfectly suitable for intensively used spaces
- knitting with cotton, that is what made Van Besouw famous.
- note its fluid character through the combination of the fibre and knitting technique. The longer the carpet is used the more beautiful it becomes
- cotton  
> very strong fibre > matt appearance > long lifespan  
  
wide range of applications (see characteristics)
- highly suitable as a custom area rug  
> rugs are supplied with a standard comfortable extra anti-slip backing
- available in custom colours from 400 m2

## SYMBOLS



## FACTS

- Type of manufacture: raschel knitted
- Pile material: 100% cotton
- Back: cotton
- Total thickness: 11,7 mm
- Pile weight: 2700 g/m2
- Width: 400 cm



3820

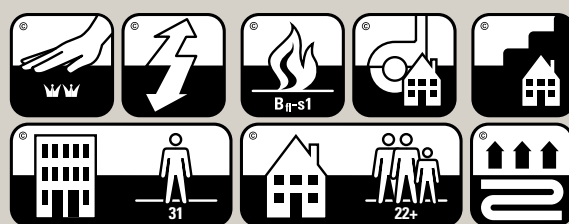




## BENEFITS

- cotton is a very strong fibre and therefore perfectly suitable for intensively used spaces
- The tricolour pile works as a solid colour, whereby the carpet perfect complements the other colours in an interior
- knitting with cotton, that is what made Van Besouw famous.
- note its fluid character through the combination of the fibre and knitting technique. The longer the carpet is used the more beautiful it becomes
- cotton  
> very strong fibre > matt appearance > long lifespan
- highly suitable as a custom area rug  
> rugs are supplied with a standard comfortable extra anti-slip backing
- available in custom colours from 400 m2

## SYMBOLS



## FACTS

- Type of manufacture: raschel knitted
- Pile material: 100% cotton
- Back: non woven
- Total thickness: 11,6 mm
- Pile weight: 2200 g/m2
- Width: 400 cm



# 2404 wilton



## 2606 design karpet







 van  
besouw

address P.O. Box 102, 8280 AC Genemuiden (NL) telephone +31 (0) 38 385 8818 e-mail [info@besouw.nl](mailto:info@besouw.nl) website [www.besouw.nl](http://www.besouw.nl)